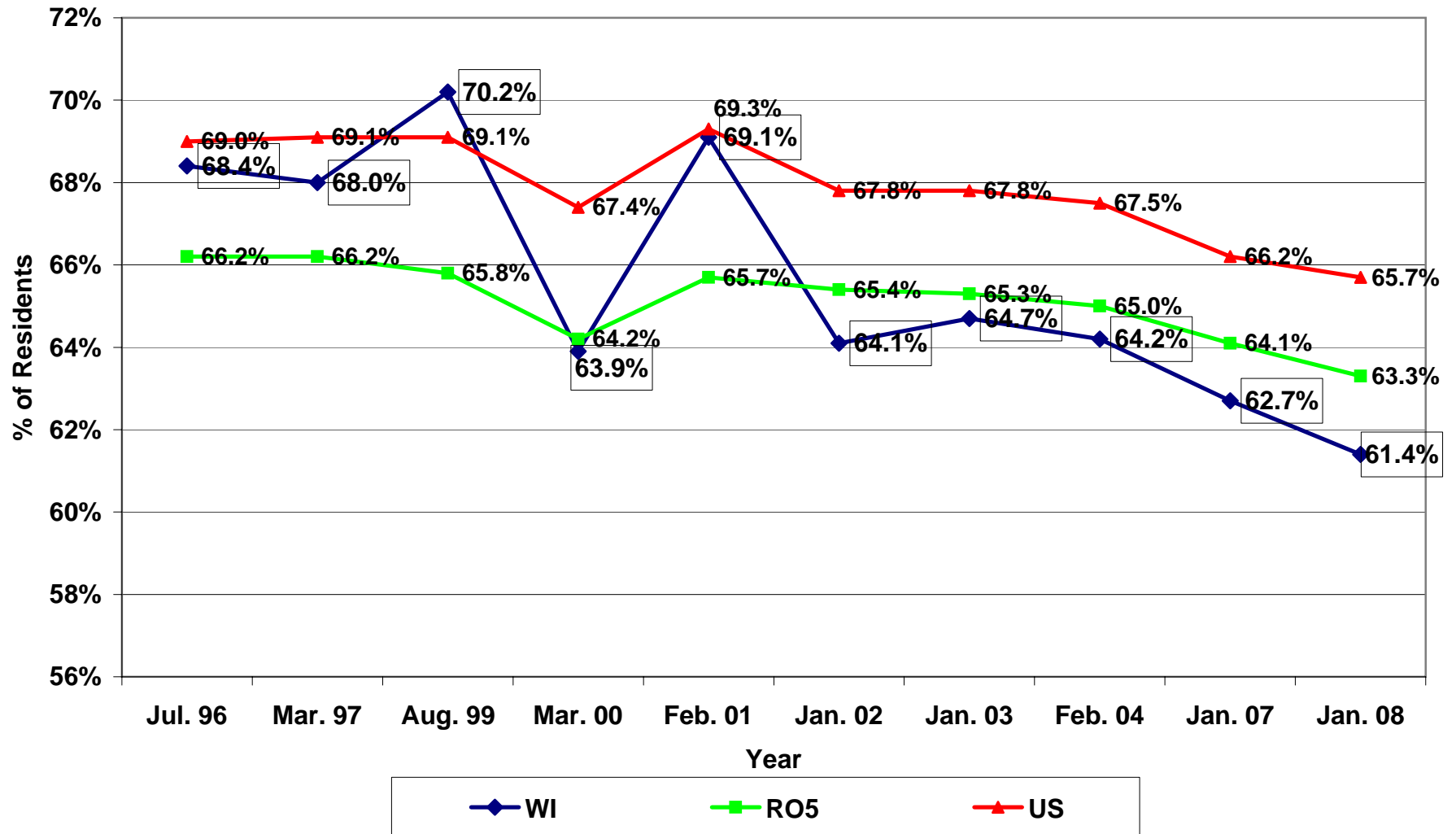


% of Residents on Medicaid 1996 - 2008

Relative Change in Wisconsin Since 1996: -8%



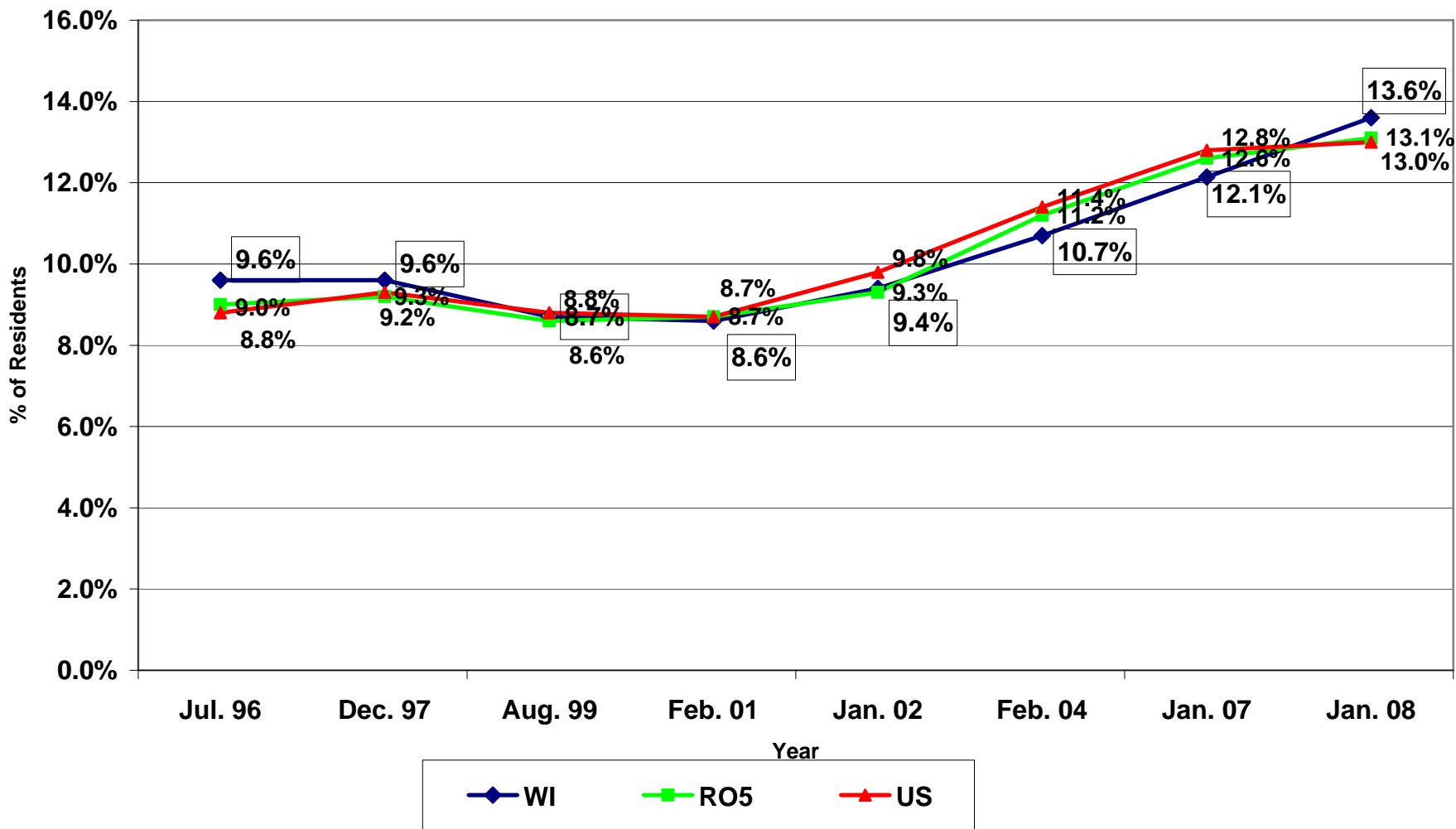
Source: WI DQA, February 2008

RO5: CMS Region 5 includes the States of Illinois, Indiana, Michigan, Minnesota, Ohio & Wisconsin.

Distributed by WAHSA

% of NH Residents on Medicare 1996 - 2008

Relative Change in Wisconsin Since 1996: +42%



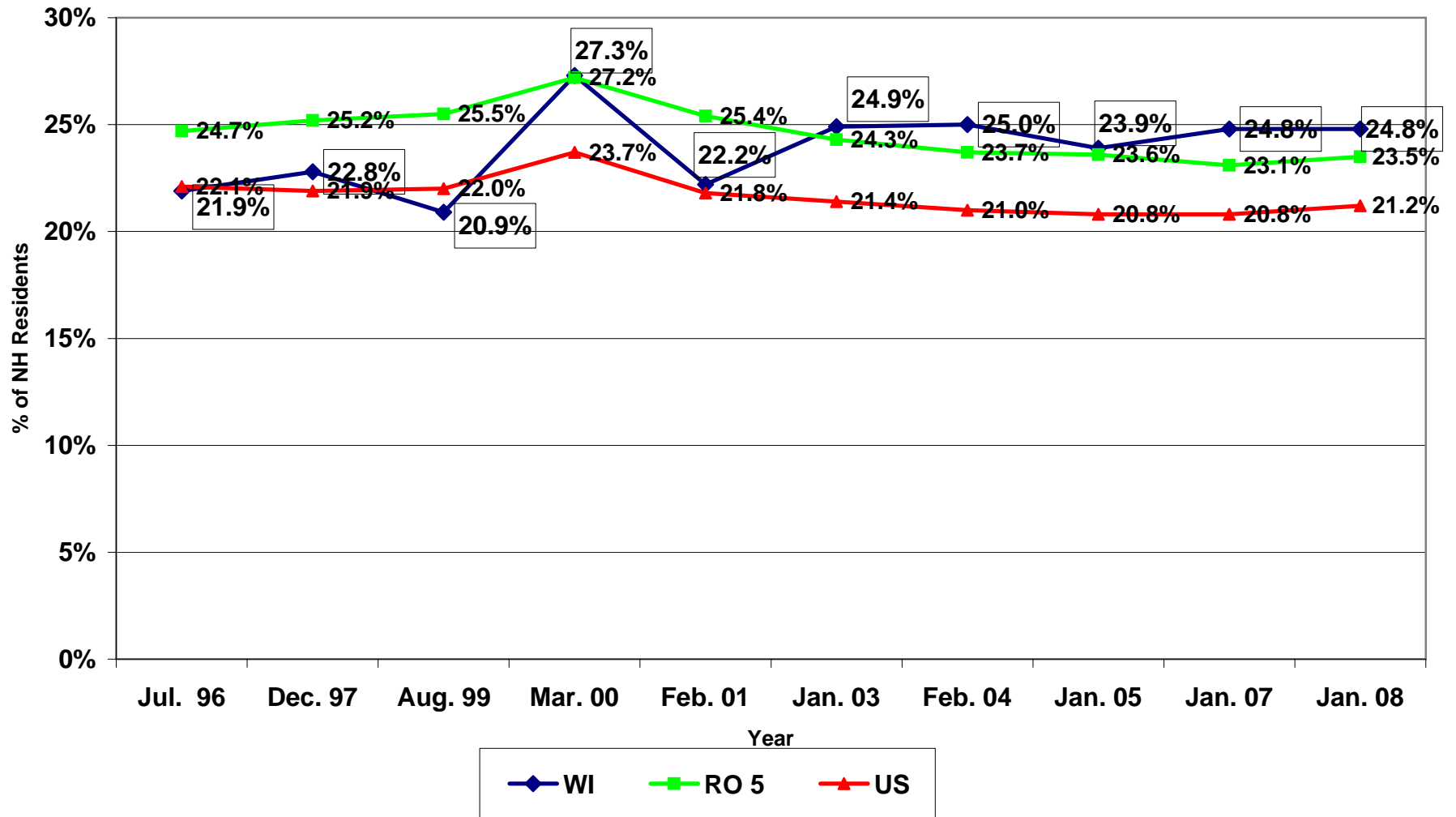
Source: WI DQA, February 2008

RO5: CMS Region 5 includes the States of Illinois, Indiana, Michigan, Minnesota, Ohio & Wisconsin.

Distributed by WAHSA

% of NH Residents NOT on Medicare or Medicaid 1996 - 2008

Relative Change in Wisconsin Since 1996: +13.2%



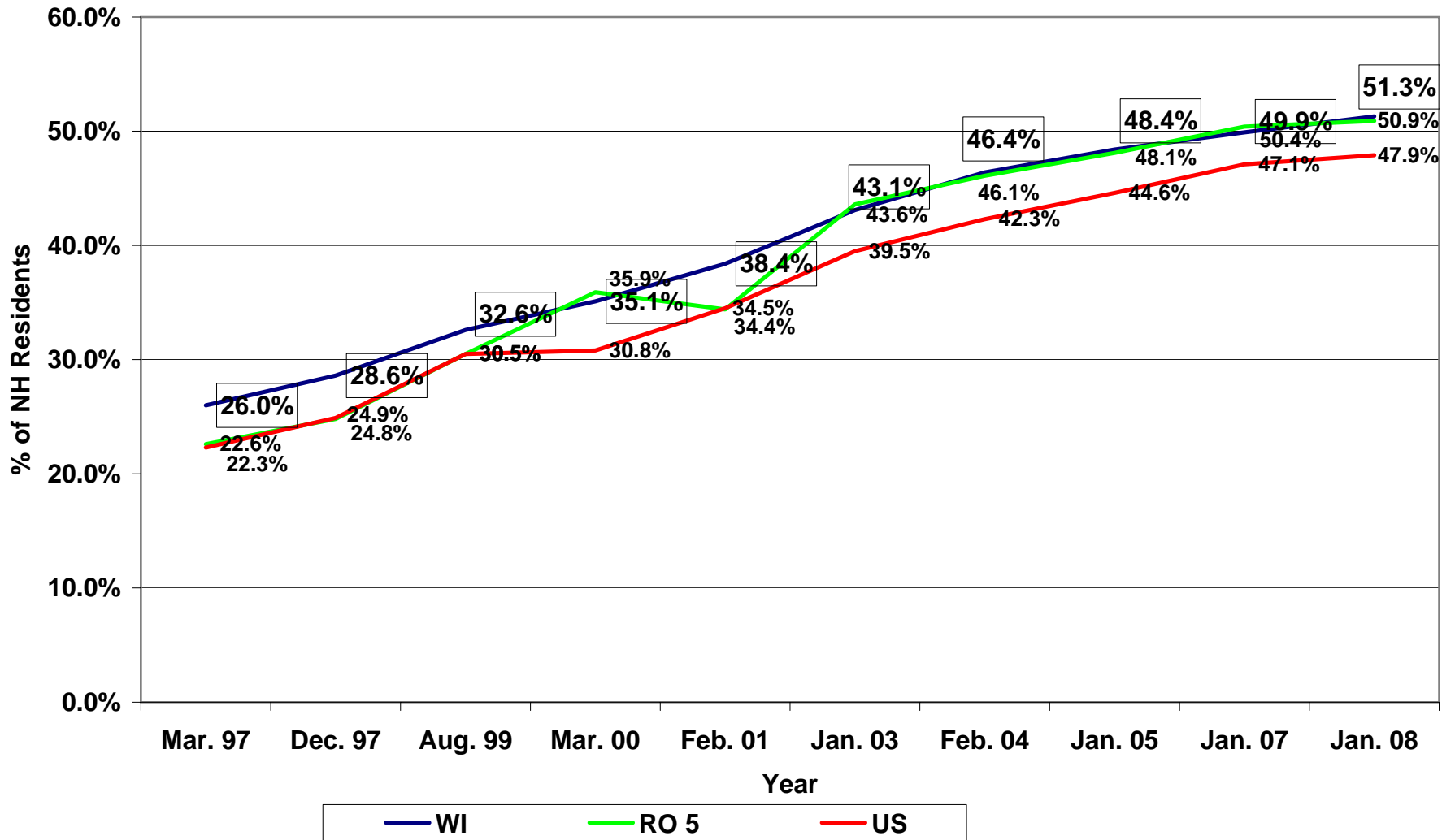
Source: WI DQA, February 2008

RO5: CMS Region Office 5 includes the States of Illinois, Indiana, Michigan, Minnesota, Ohio & Wisconsin.

Distributed by WAHSA

% of NH Residents Receiving Antidepressants 1996 - 2008

Relative Change in Wisconsin since 1996: +97%



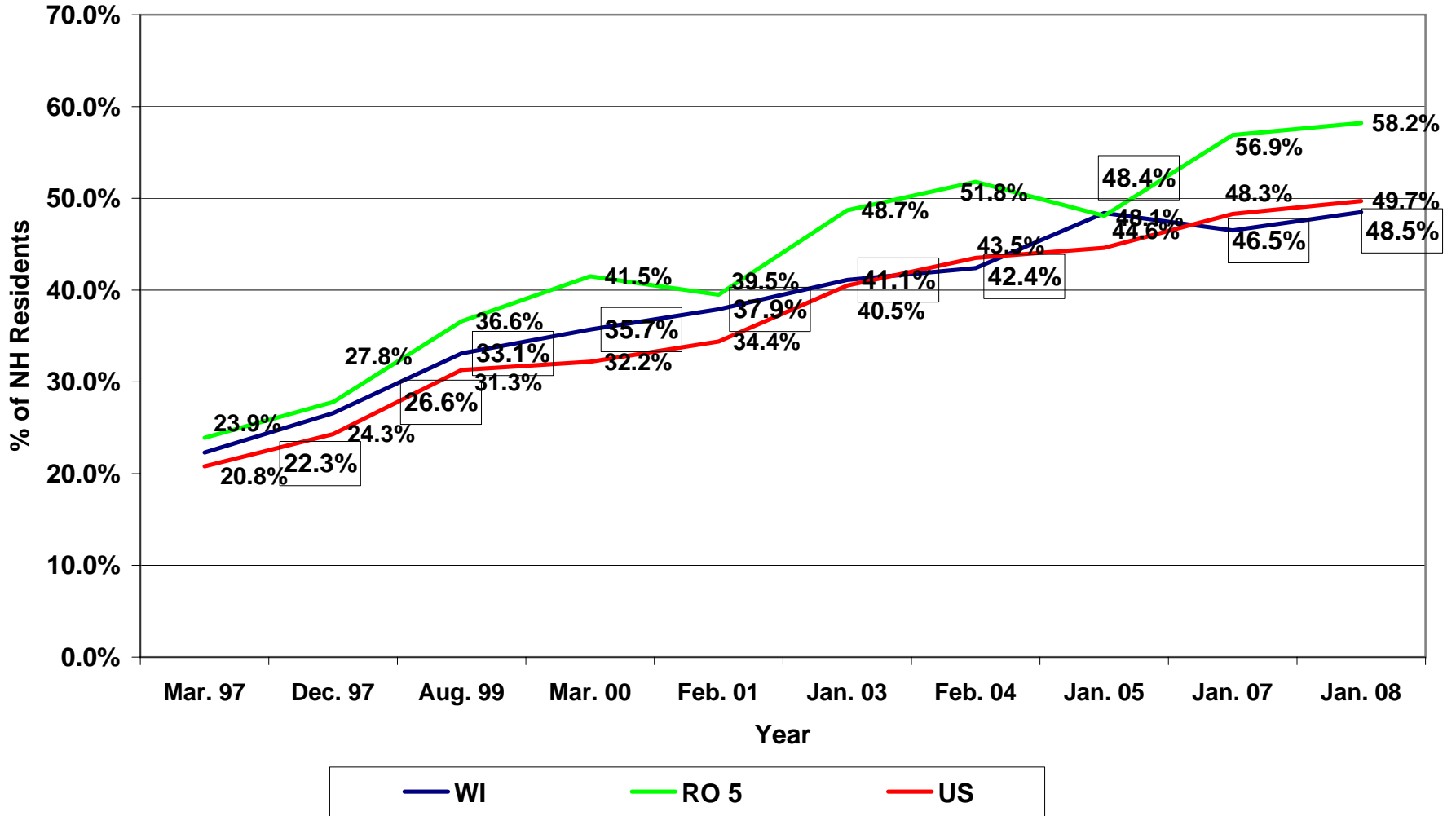
Source: WI DQA, February 2008

RO5: CMS Region Office 5 includes the States of Illinois, Indiana, Michigan, Minnesota, Ohio & Wisconsin.

Distributed by WAHSA

% of NH Residents with Depression Diagnosis 1996 - 2008

Relative Change in Wisconsin since 1996: +118%



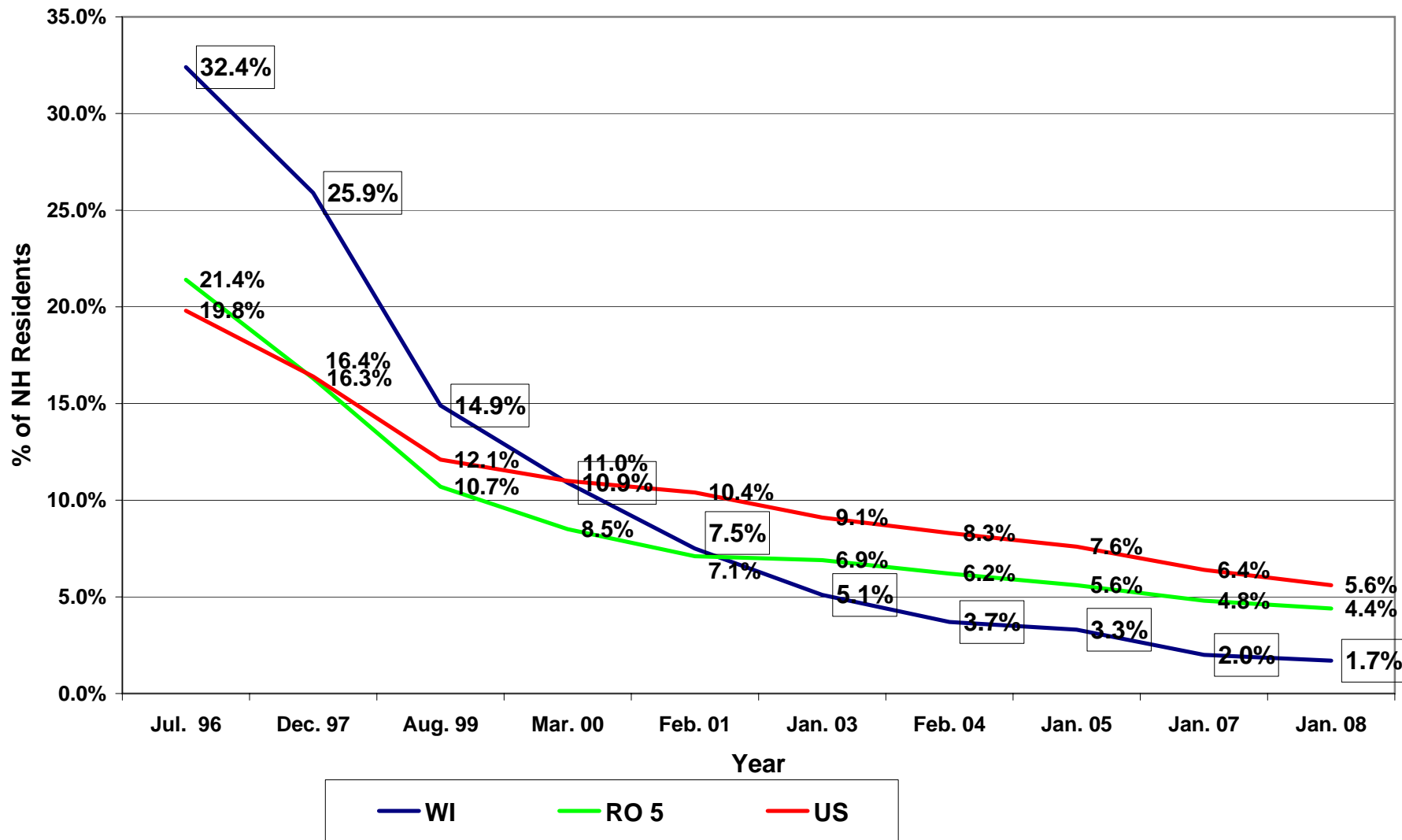
Source: WI DQA, February 2008

RO5: CMS Region Office 5 includes the States of Illinois, Indiana, Michigan, Minnesota, Ohio & Wisconsin.

Distributed by WAHSA

% of NH Residents Who Are Restrained 1996 - 2008

Relative Change in Wisconsin since 1996: -95%



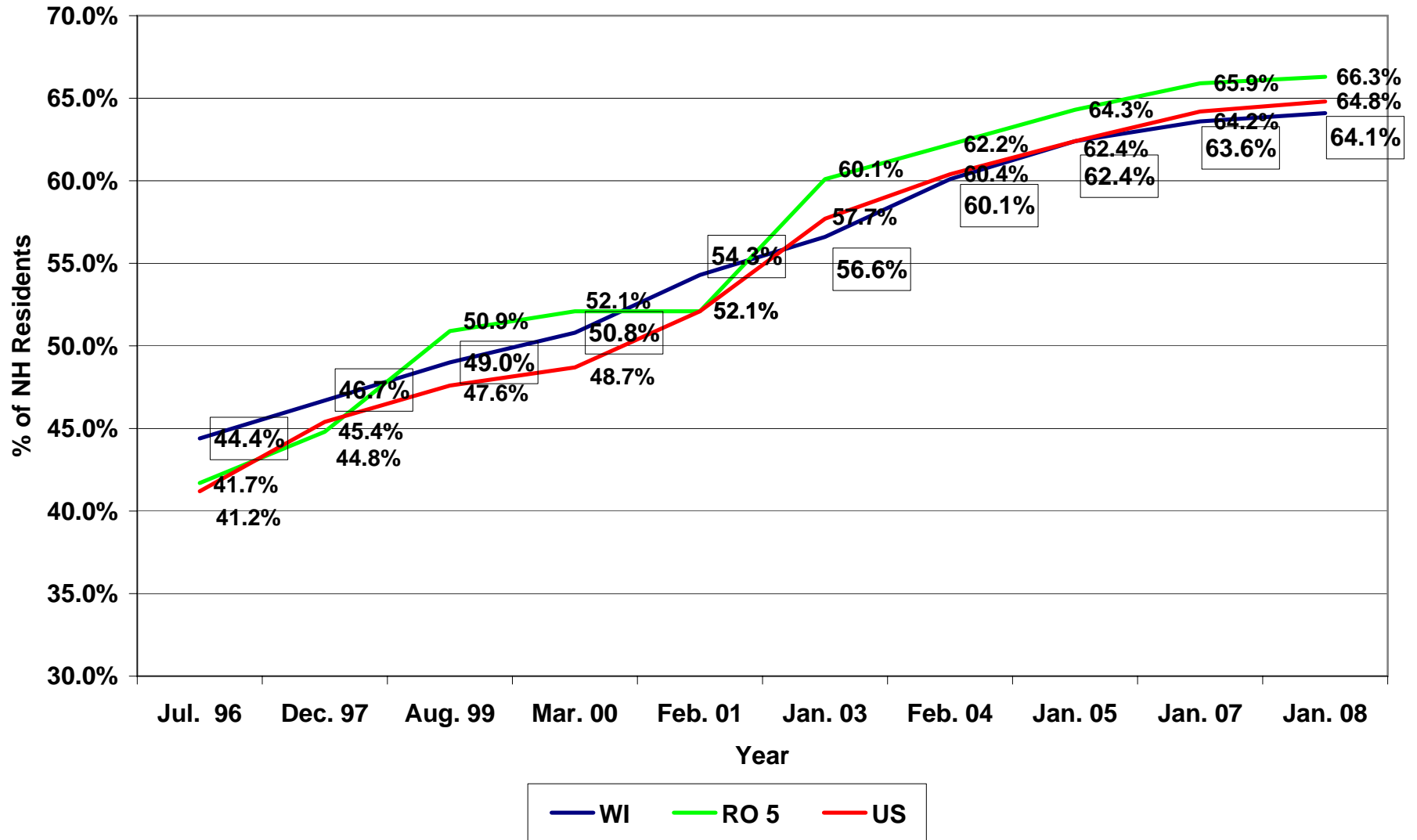
Source: WI DQA, February 2008

RO5: CMS Region Office 5 includes the States of Illinois, Indiana, Michigan, Minnesota, Ohio & Wisconsin.

Distributed by WAHSA

% of NH Residents on Psychoactive Medications 1996 - 2008

Relative Change in Wisconsin since 1996: +44%



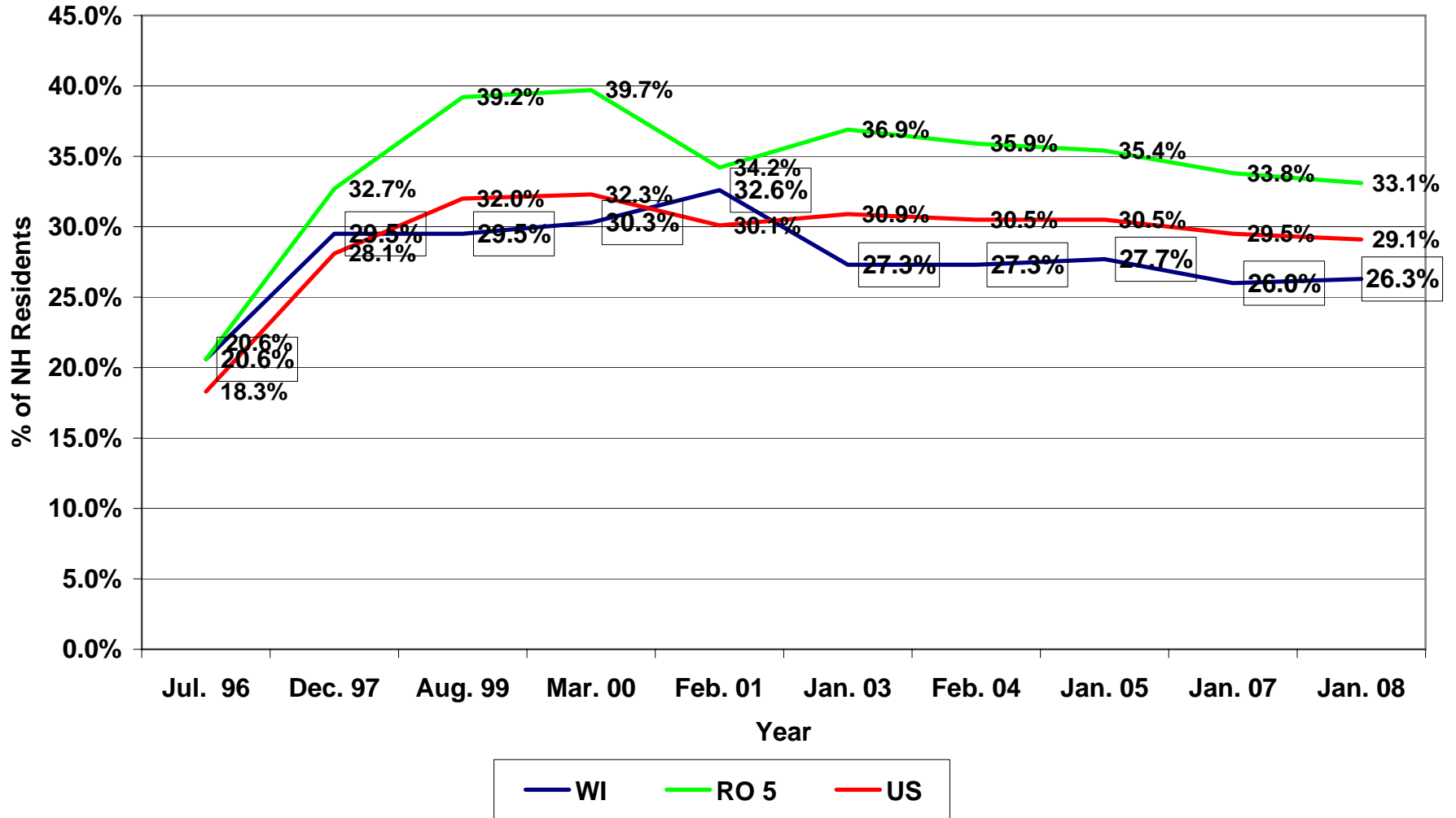
Source: WI DQA, February 2008

RO5: CMS Region Office 5 includes the States of Illinois, Indiana, Michigan, Minnesota, Ohio & Wisconsin.

Distributed by WAHSA

% of NH Residents with Behavior Symptoms 1996 - 2008

Relative Change in Wisconsin since 1996: +28%



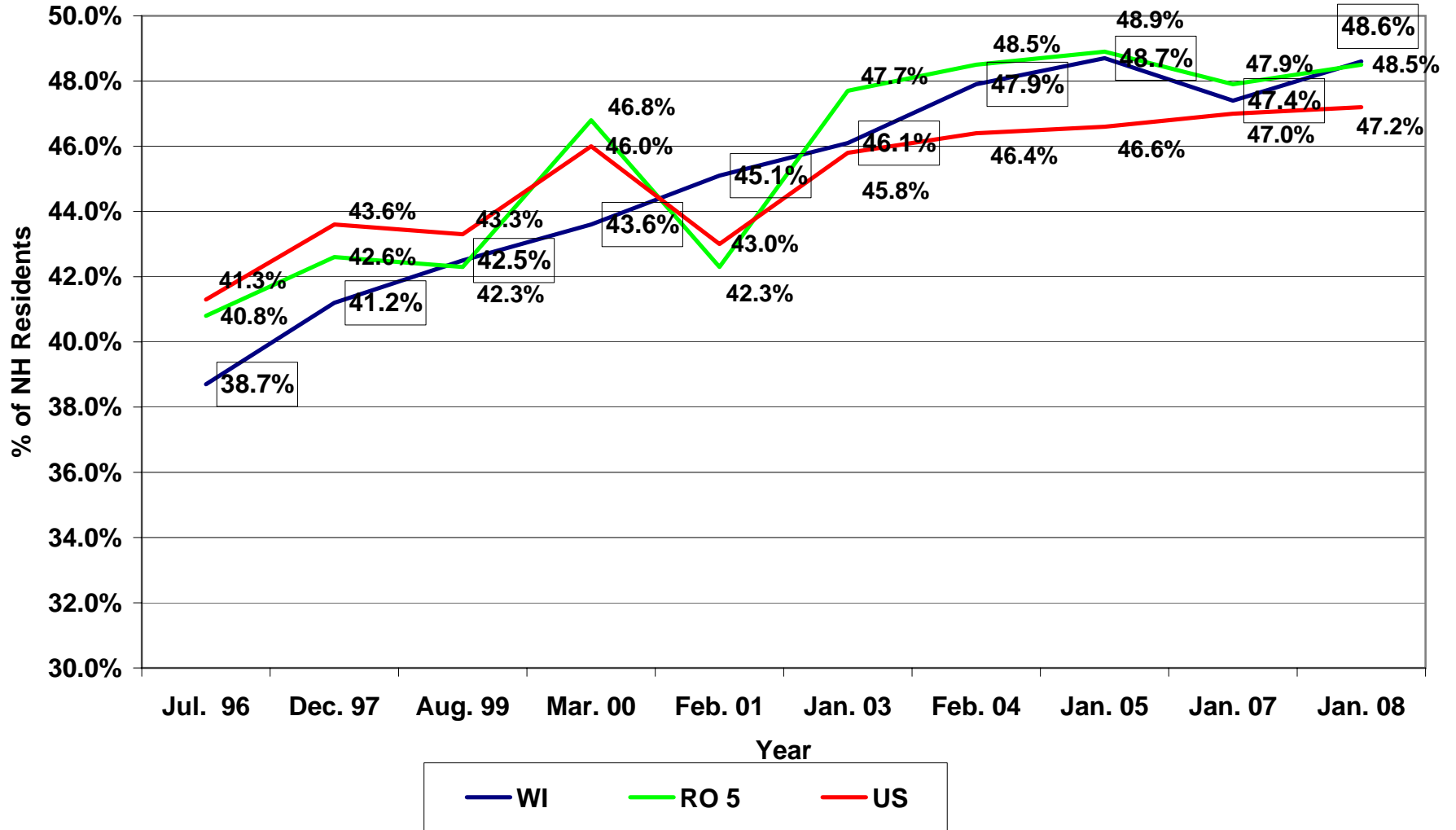
Source: WI DQA, February 2008

RO5: CMS Region Office 5 includes the States of Illinois, Indiana, Michigan, Minnesota, Ohio & Wisconsin.

Distributed by WAHSA

% of NH Residents with Dementia 1996 - 2008

Relative Change in Wisconsin since 1996: +26%



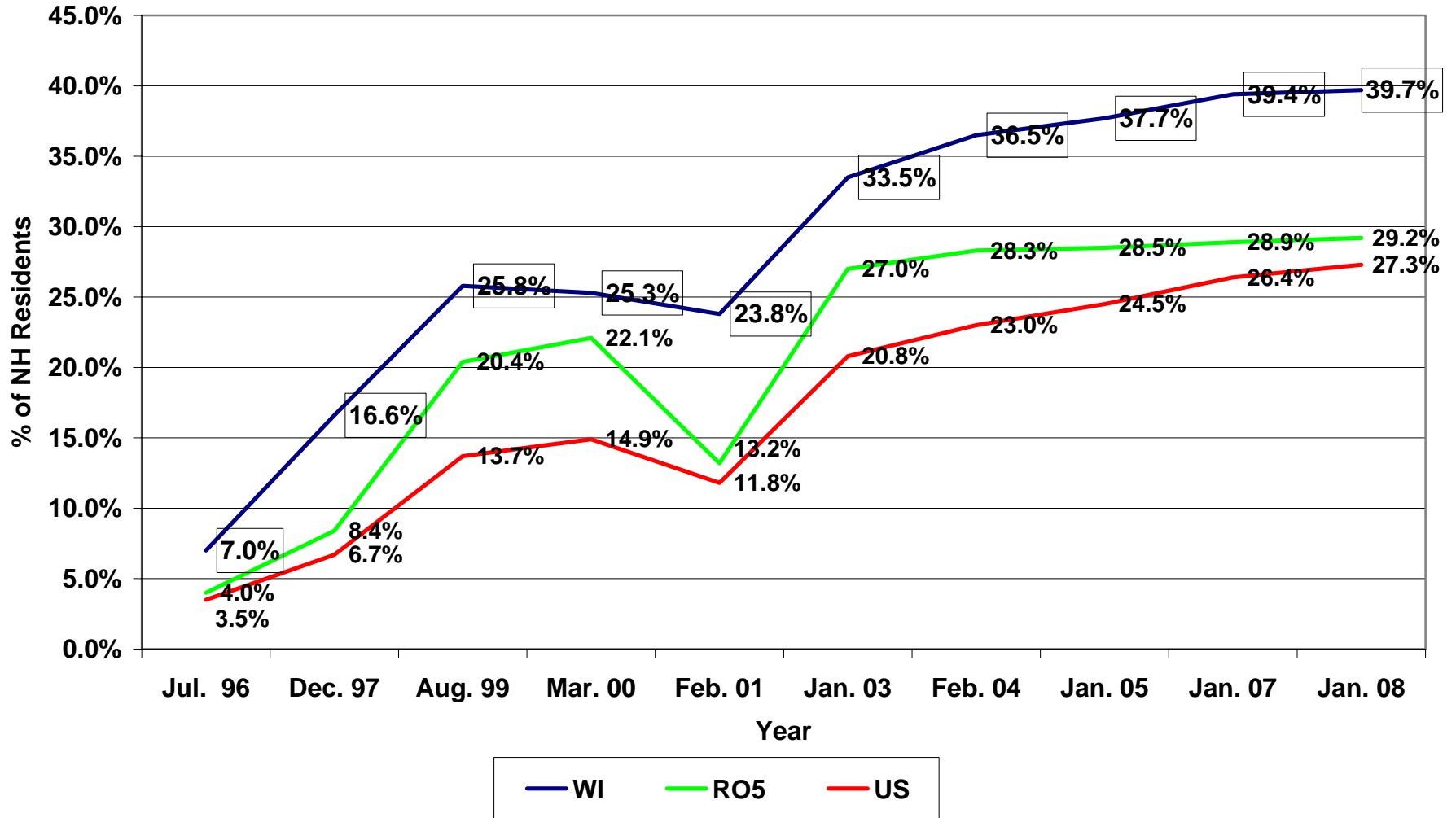
Source: WI DQA, February 2008

RO5: CMS Region Office 5 includes the States of Illinois, Indiana, Michigan, Minnesota, Ohio & Wisconsin.

Distributed by WAHSA

% of NH Residents on Pain Management Program 1996 - 2008

Relative Change in Wisconsin since 1996: +467%



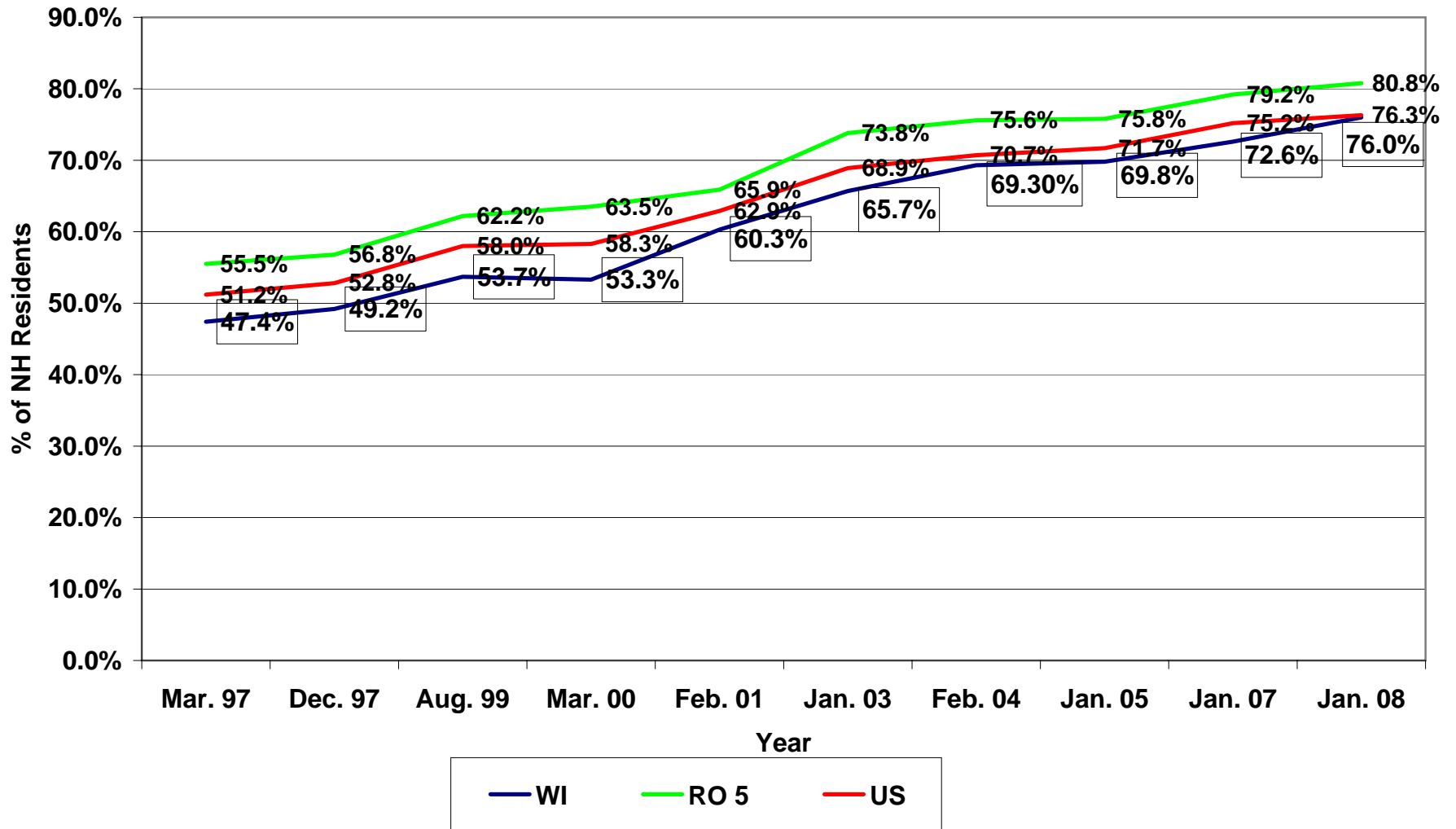
Source: WI DQA, February 2008

RO5: CMS Region Office 5 includes the States of Illinois, Indiana, Michigan, Minnesota, Ohio & Wisconsin.

Distributed by WAHSA

% of NH Residents Receiving Preventative Skin Care 1996 - 2008

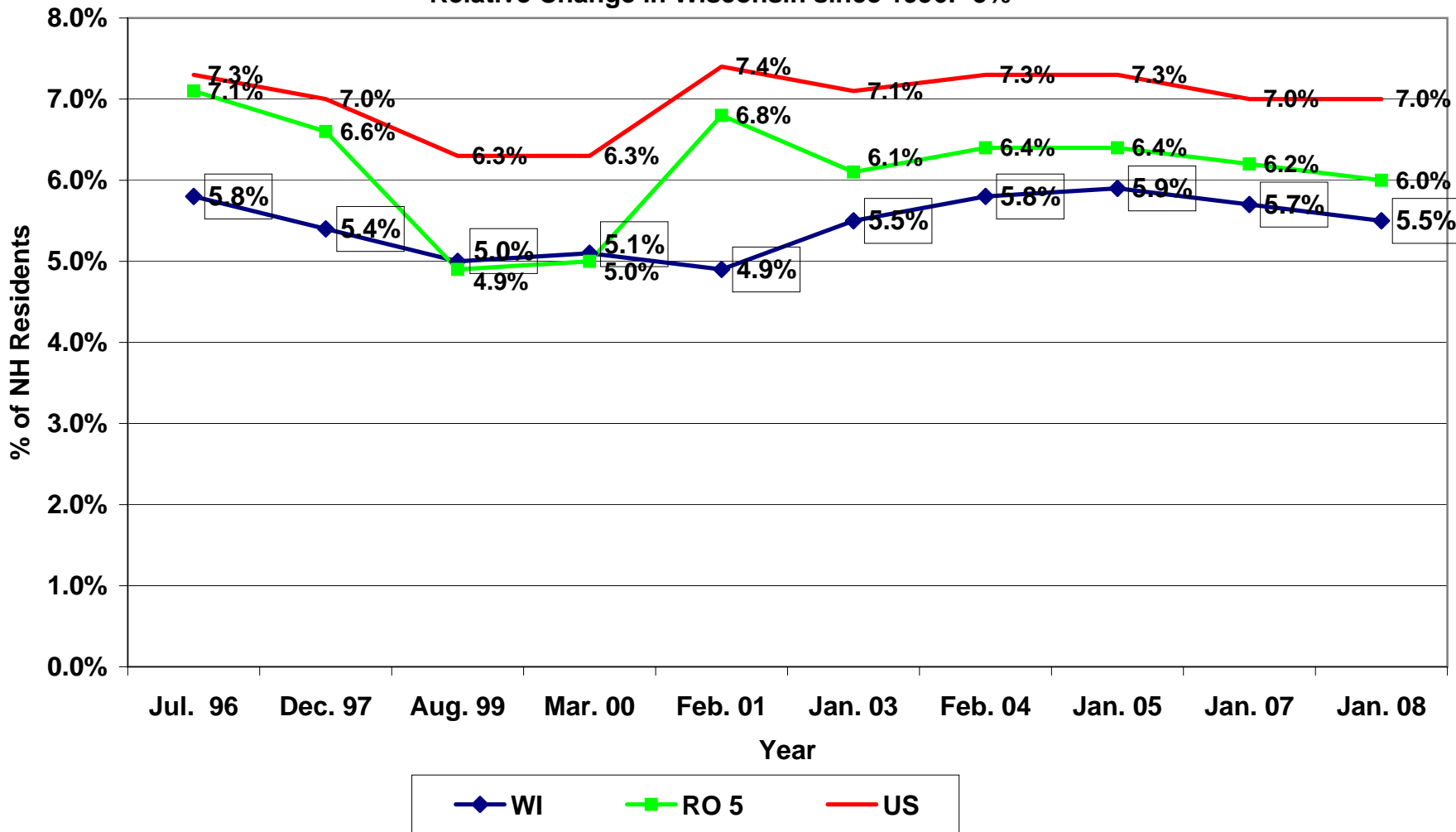
Relative Change in Wisconsin since 1996: +60%



Source: WI DQA, February 2008
 RO5: CMS Region Office 5 includes the States of Illinois, Indiana, Michigan, Minnesota, Ohio & Wisconsin.
 Distributed by WAHSA

% of NH Residents with Pressure Ulcers 1996 - 2008

Relative Change in Wisconsin since 1996: -5%



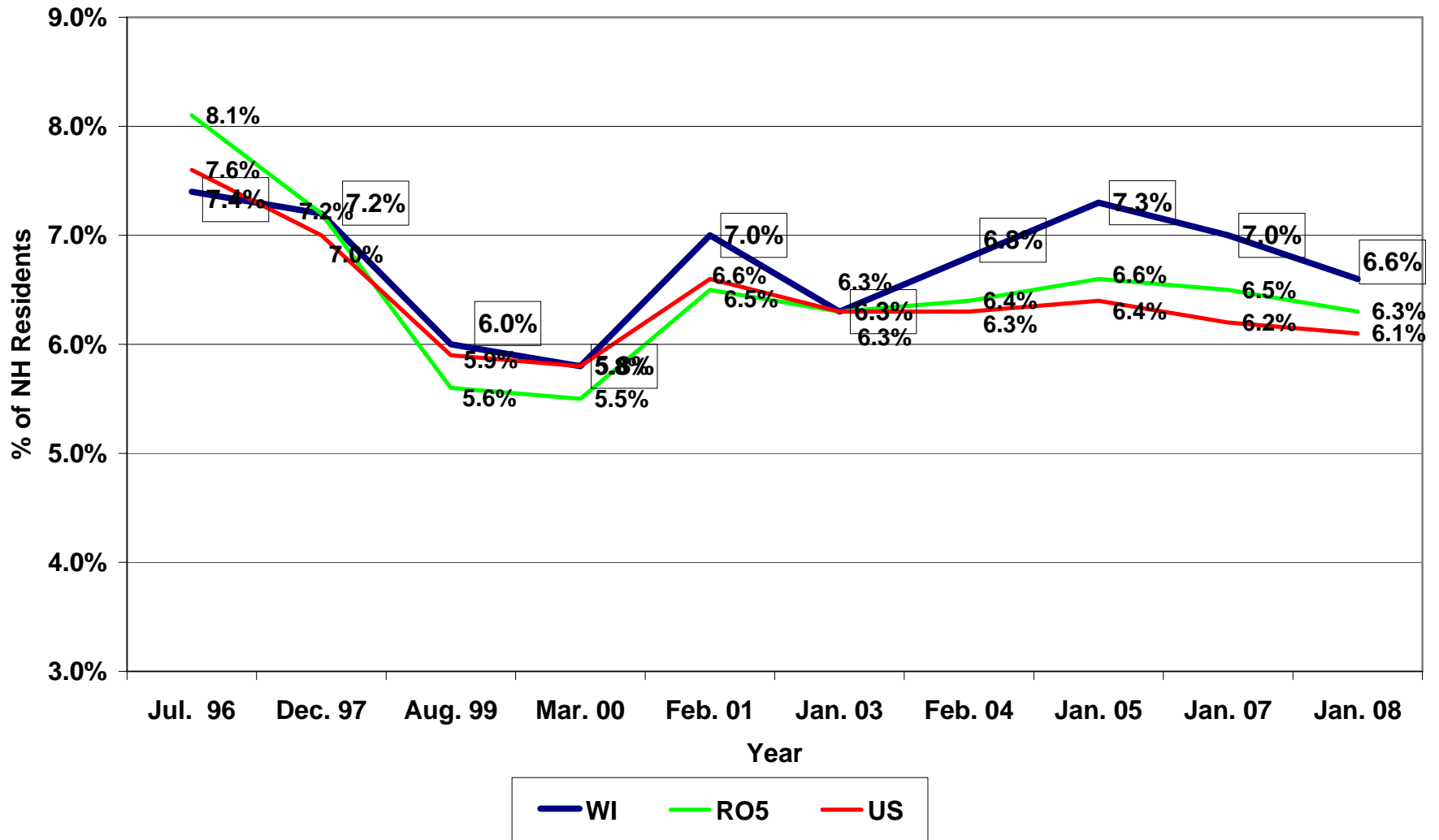
Source: WI DQA, February 2008

RO5: CMS Region 5 includes the States of Illinois, Indiana, Michigan, Minnesota, Ohio & Wisconsin.

Distributed by WAHSA

% of NH Residents with Catheter 1996 - 2008

Relative Change in Wisconsin since 1996: -11%



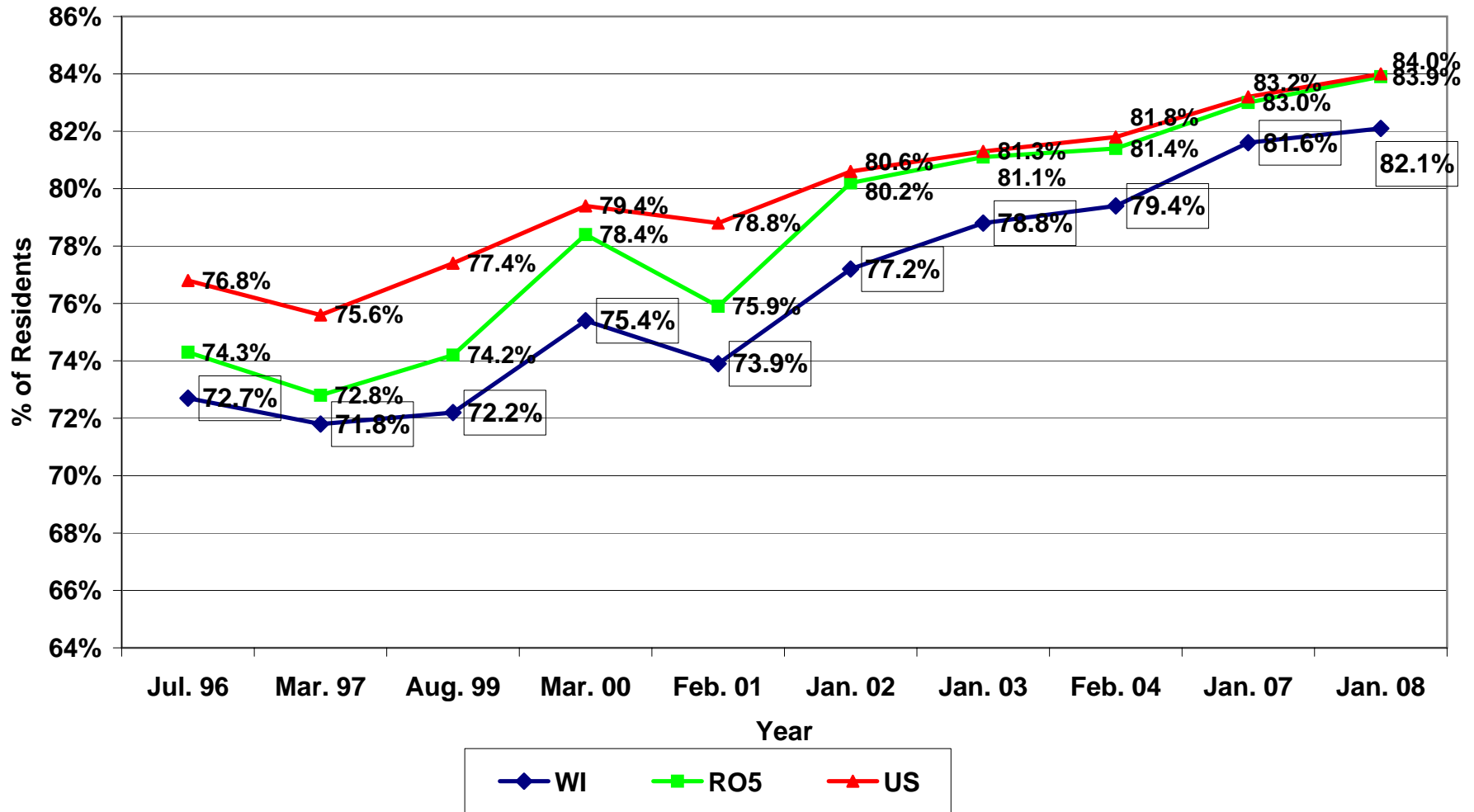
Source: WI DQA, February 2008

RO5: CMS Region Office 5 includes the States of Illinois, Indiana, Michigan, Minnesota, Ohio & Wisconsin.

Distributed by WAHSA

% of Residents Dependent on or Requiring Staff Assistance with Toileting 1996 - 2008

Relative Change in Wisconsin Since 1996: +13%



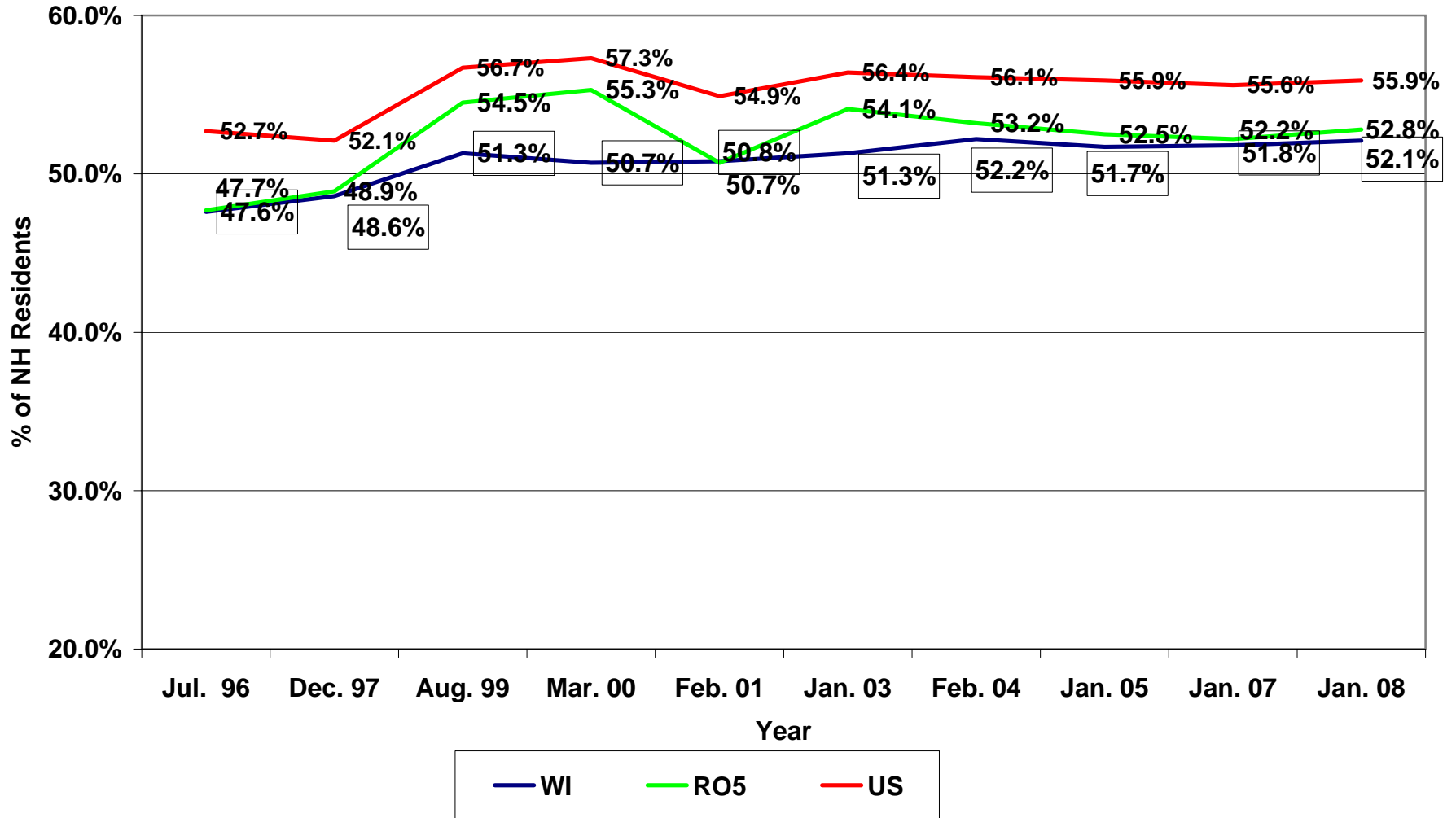
Source: WI DQA, February 2008

RO5: CMS Region Office 5 includes the States of Illinois, Indiana, Michigan, Minnesota, Ohio & Wisconsin.

Distributed by WAHSA

% of NH Residents Incontinent of Bladder 1996 - 2008

Relative Change in Wisconsin since 1996: +10%



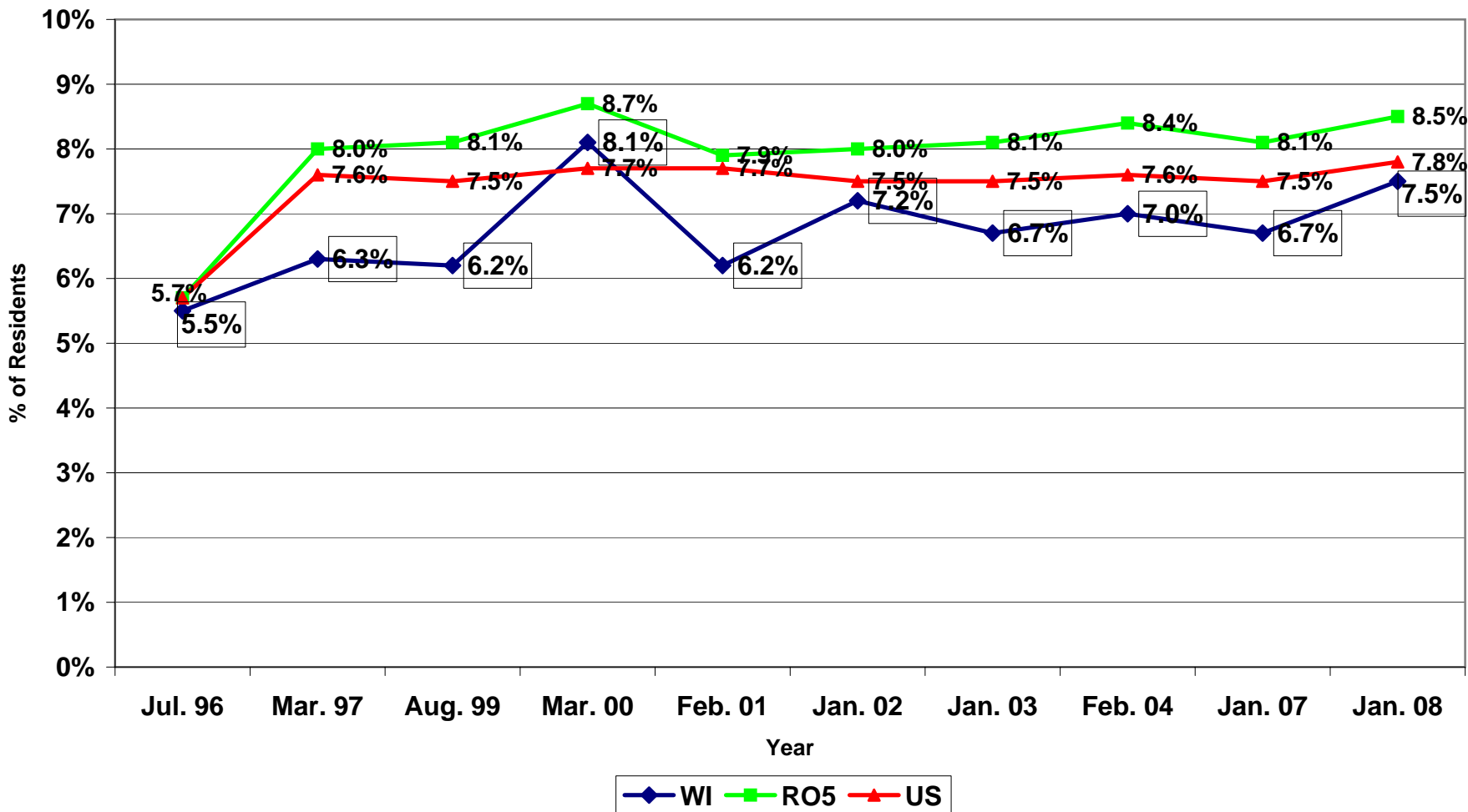
Source: WI DQA, February 2008

RO5: CMS Region Office 5 includes the States of Illinois, Indiana, Michigan, Minnesota, Ohio & Wisconsin.

Distributed by WAHSA

% of Residents with Unplanned Significant Weight Loss 1996 - 2008

Relative Change in Wisconsin Since 1996: +36%



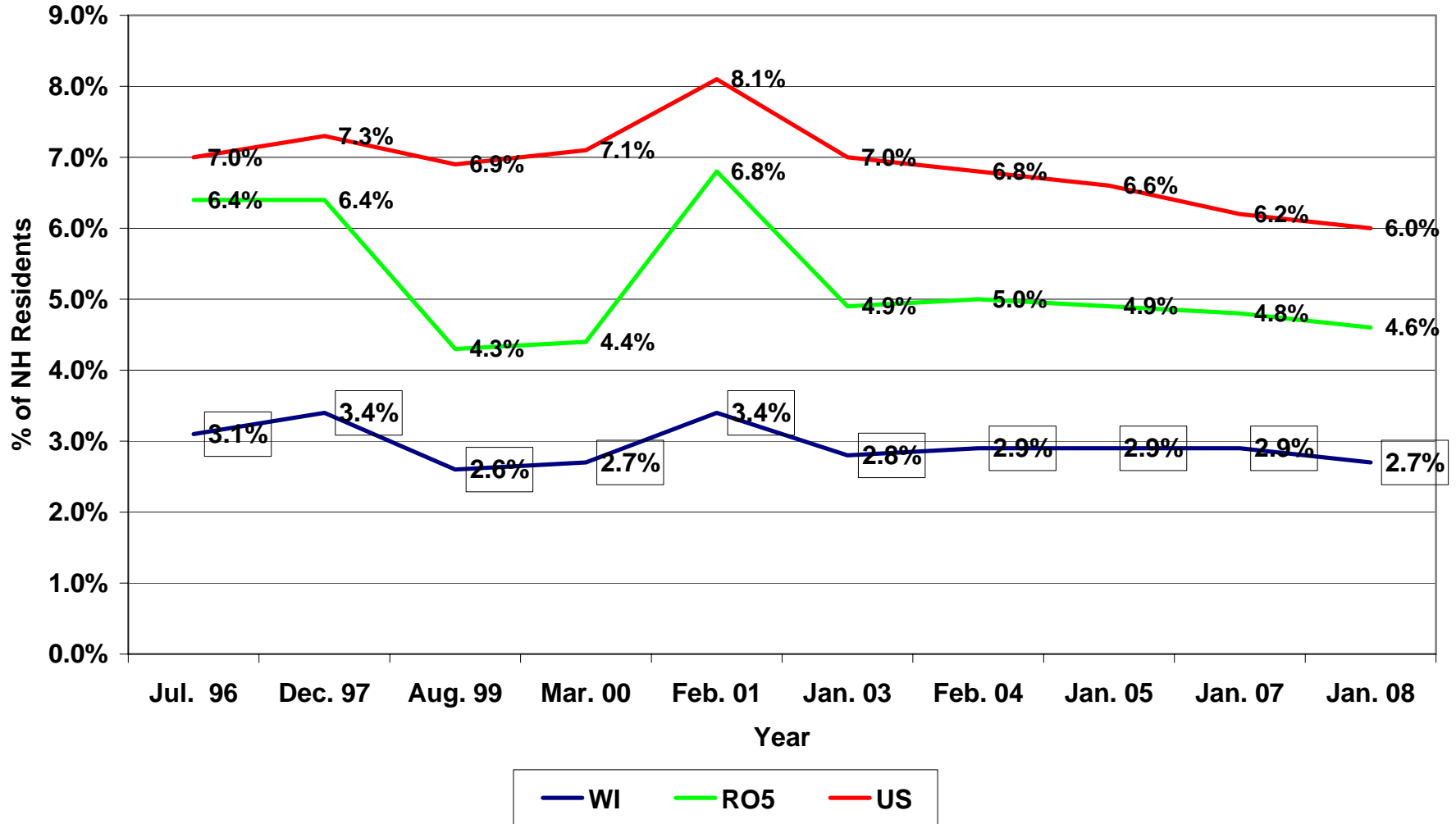
Source: WI DQA, February 2008

RO5: CMS Region Office 5 includes the States of Illinois, Indiana, Michigan, Minnesota, Ohio & Wisconsin.

Distributed by WAHSA

% of NH Residents Who Are Tube Fed 1996 - 2008

Relative Change in Wisconsin since 1996: -13%



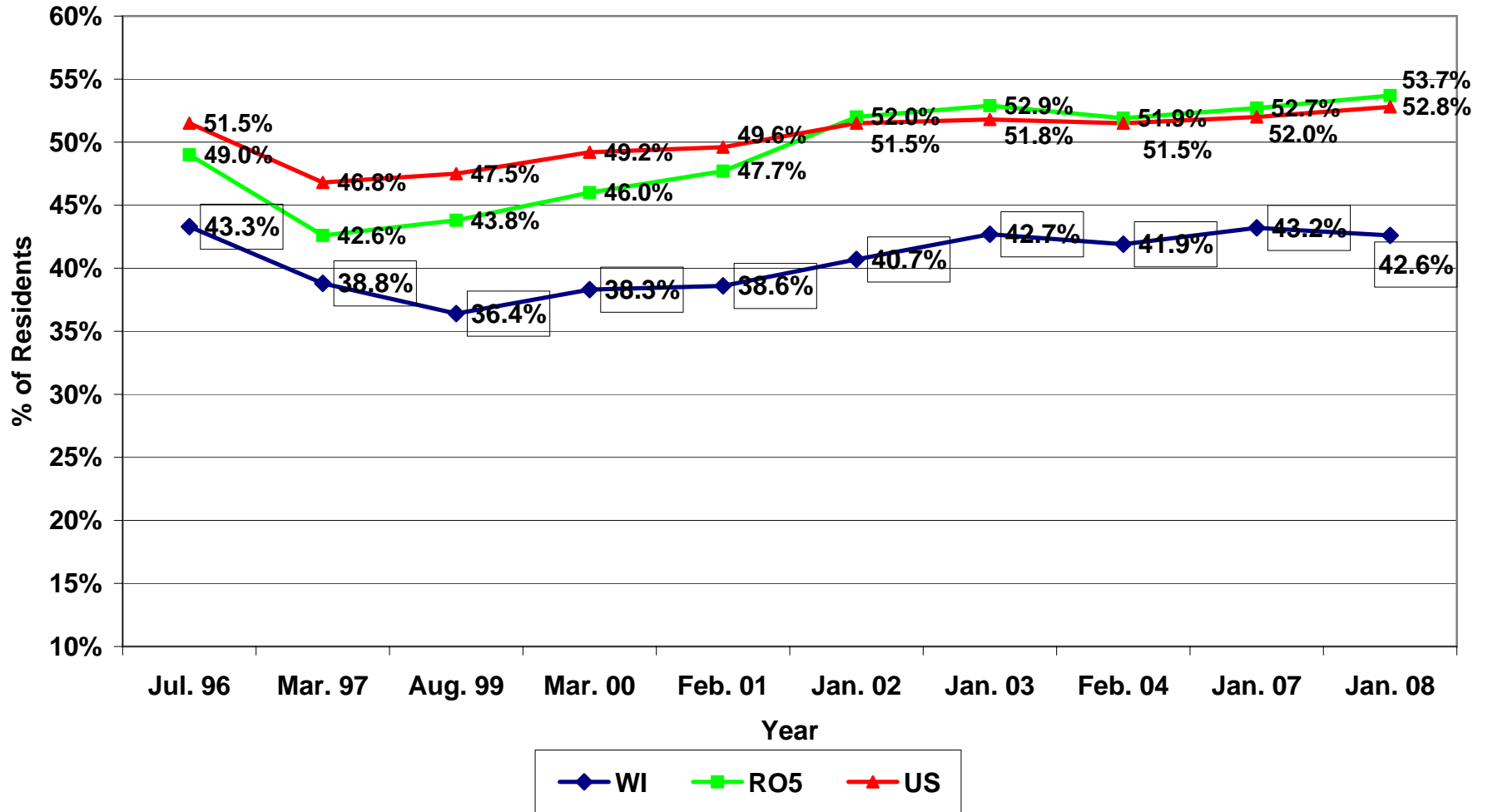
Source: WI DQA, February 2008

RO5: CMS Region Office 5 includes the States of Illinois, Indiana, Michigan, Minnesota, Ohio & Wisconsin.

Distributed by WAHSA

% of Residents Dependent on or Requiring Staff Assistance with Eating 1996 - 2008

Relative Change in Wisconsin Since 1996: -2%



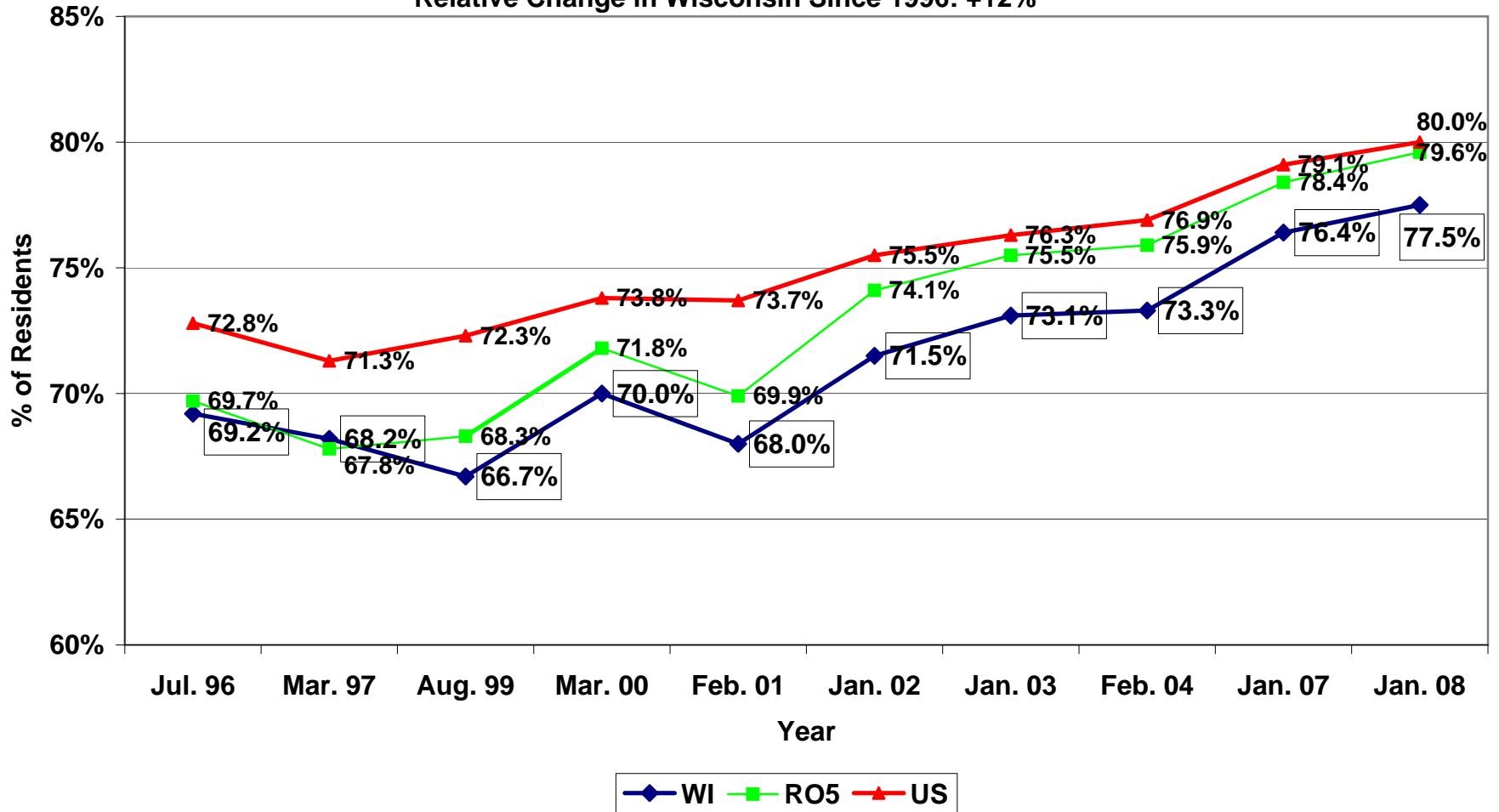
Source: WI DQA, February 2008

RO5: CMS Region Office 5 includes the States of Illinois, Indiana, Michigan, Minnesota, Ohio & Wisconsin.

Distributed by WAHSA

% of Residents Dependent on or Requiring Staff Assistance with Transferring 1996 - 2008

Relative Change in Wisconsin Since 1996: +12%



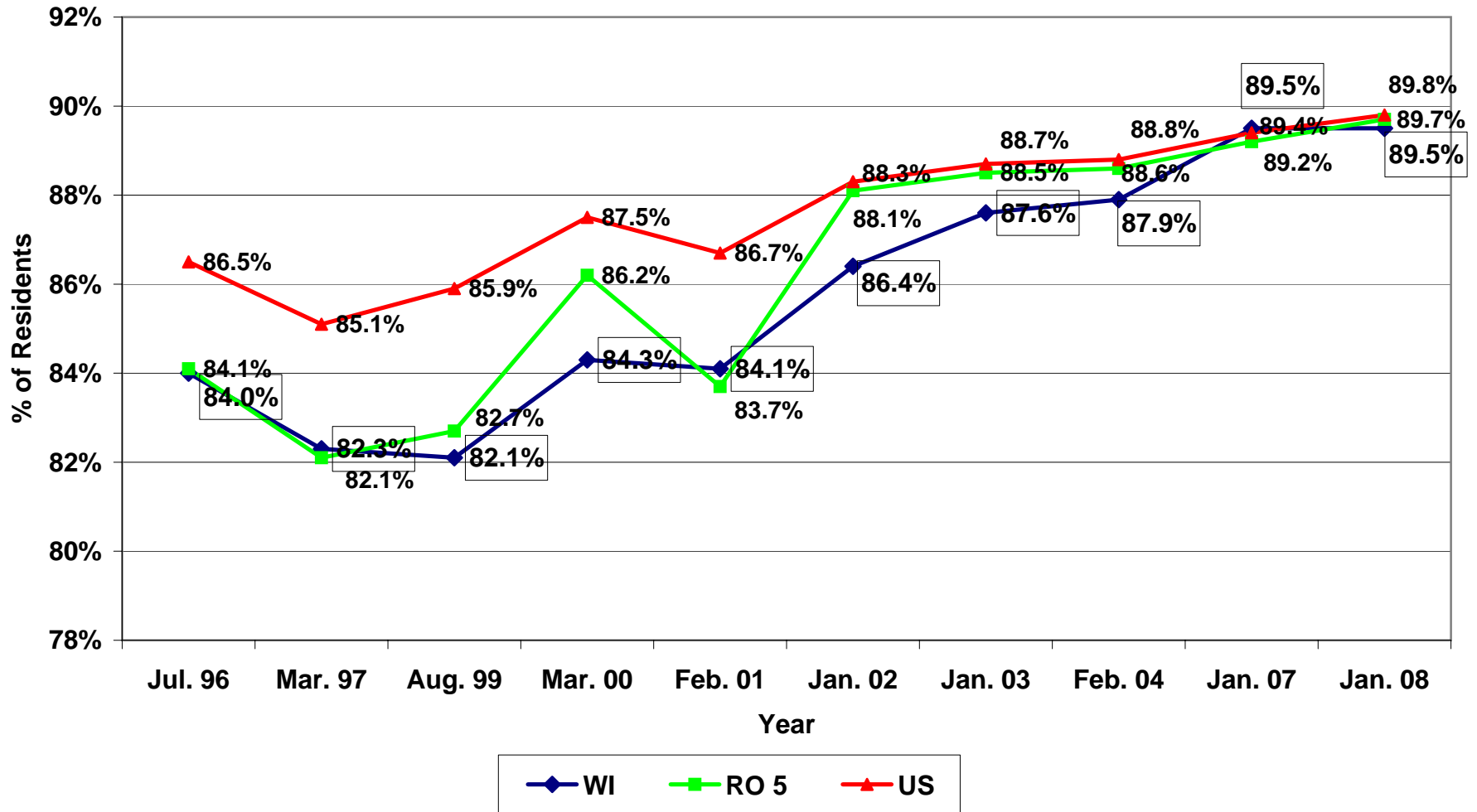
Source: WI DQA, February 2008

RO5: CMS Region Office 5 includes the States of Illinois, Indiana, Michigan, Minnesota, Ohio & Wisconsin.

Distributed by WAHSA

% of Residents Dependent on or Requiring Staff Assistance with Dressing 1996 - 2008

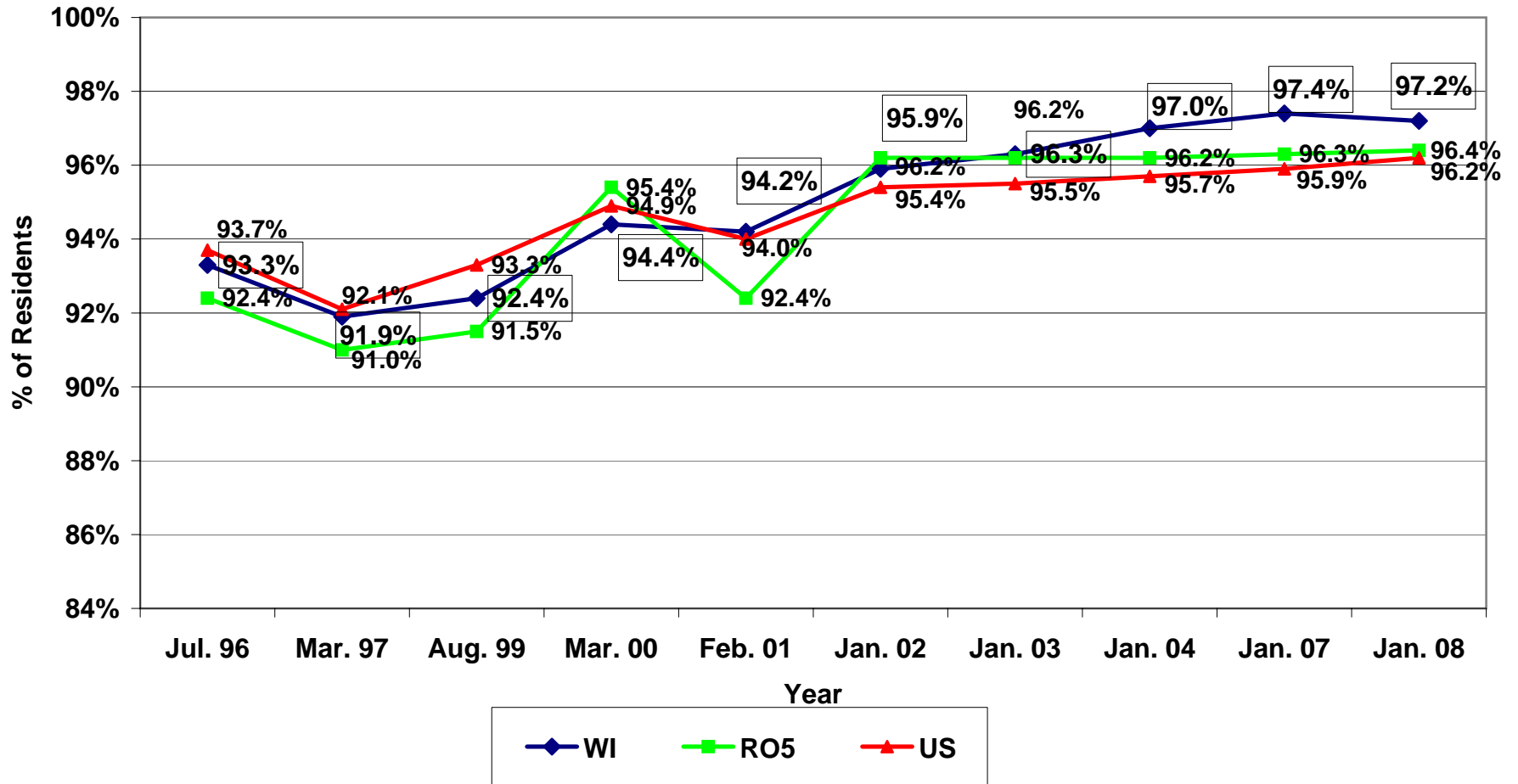
Relative Change in Wisconsin Since 1996: +7%



Source: WI DQA, February 2008
 RO5: CMS Region Office 5 includes the States of Illinois, Indiana, Michigan, Minnesota, Ohio & Wisconsin.
 Distributed by WAHSA

% of Resident Dependent on or Requiring Staff Assistance with Bathing 1996 - 2008

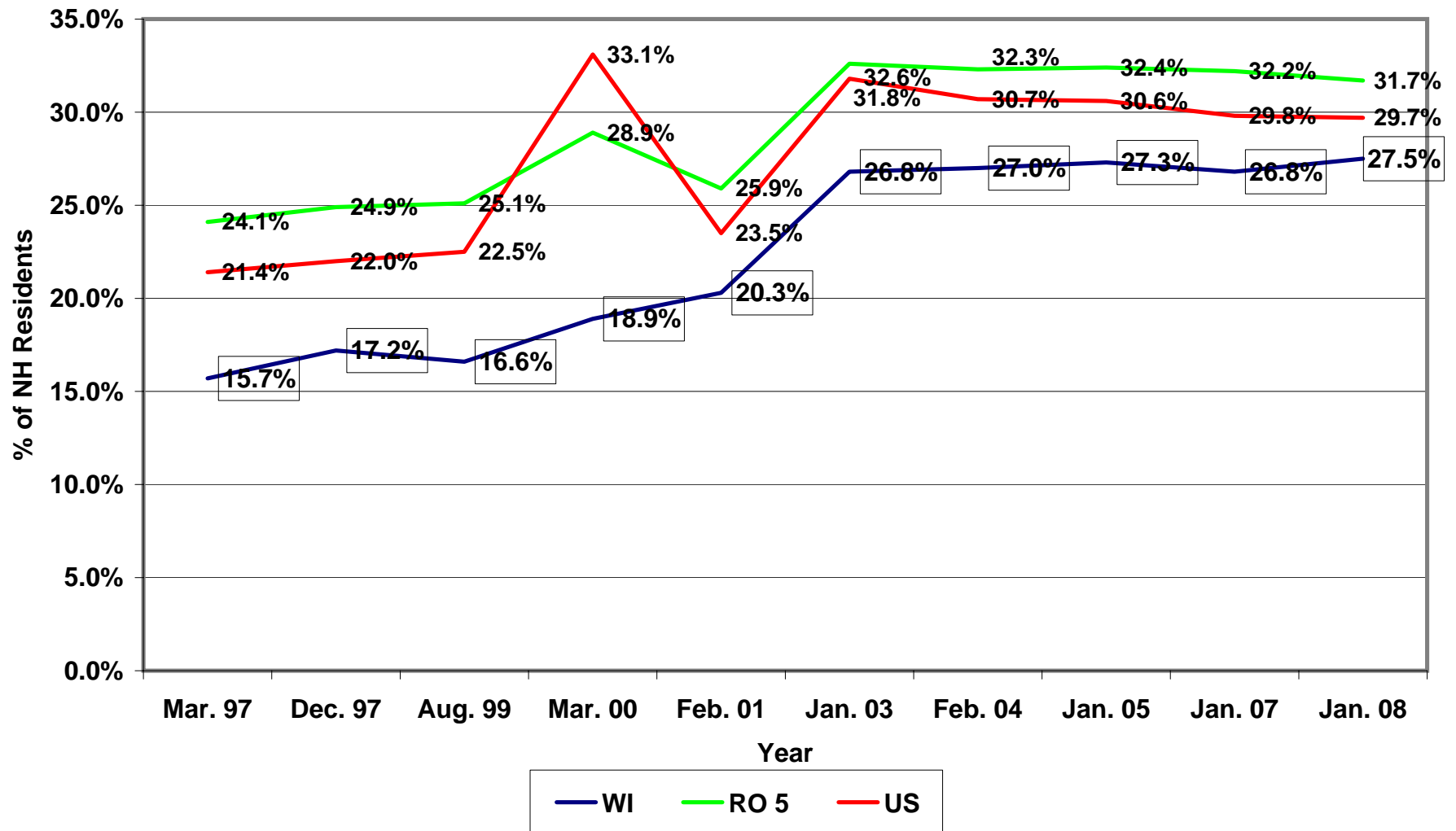
Relative Change in Wisconsin Since 1996: +4%



Source: WI DQA, February 2008
 RO5: CMS Region Office 5 includes the States of Illinois, Indiana, Michigan, Minnesota, Ohio & Wisconsin.
 Distributed by WAHSA

% of NH Residents with Contractures 1996 - 2008

Relative Change in Wisconsin since 1996: +75%



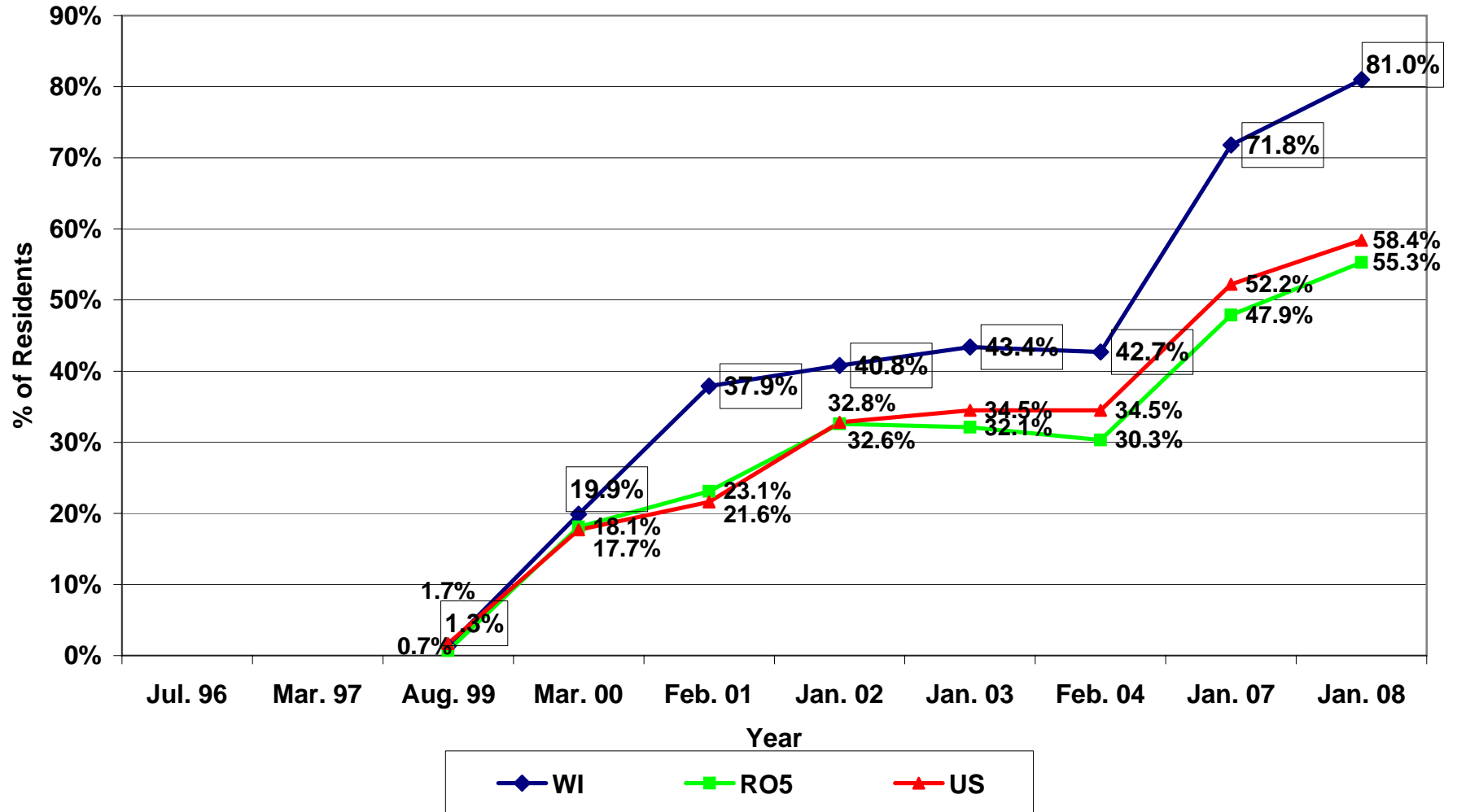
Source: WI DQA, February 2008

RO5: CMS Region Office 5 includes the States of Illinois, Indiana, Michigan, Minnesota, Ohio & Wisconsin.

Distributed by WAHSA

% of Residents Immunized for Pneumonia 1996 - 2008

Relative Change in Wisconsin Since 1996: +6131%



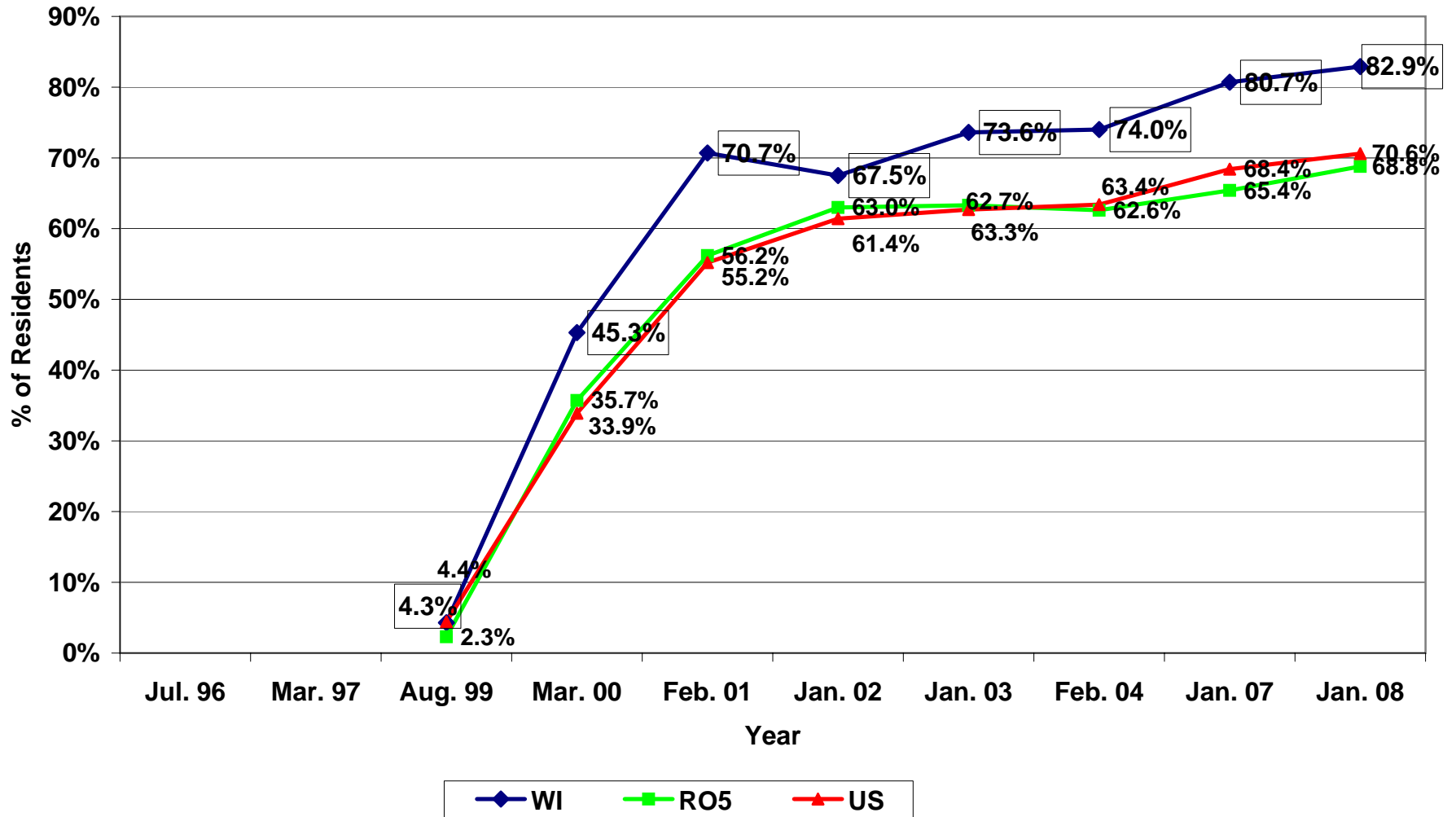
Source: WI DQA, February 2008

RO5: CMS Region Office 5 includes the States of Illinois, Indiana, Michigan, Minnesota, Ohio & Wisconsin.

Distributed by WAHSA

% of Residents Immunized for Flu 1996 - 2008

Relative Change in Wisconsin Since 1999: +1828%



Source: WI DQA, February 2008

RO5: CMS Region Office 5 includes the States of Illinois, Indiana, Michigan, Minnesota, Ohio & Wisconsin.

Distributed by WAHSA