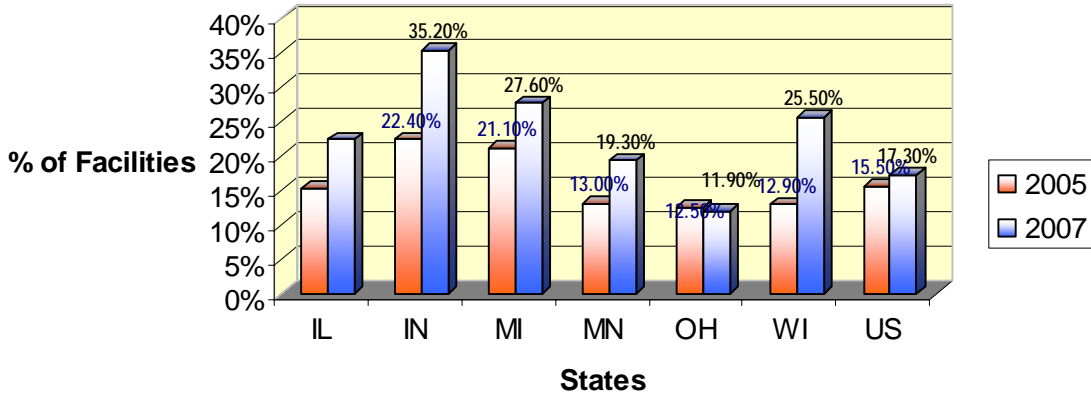
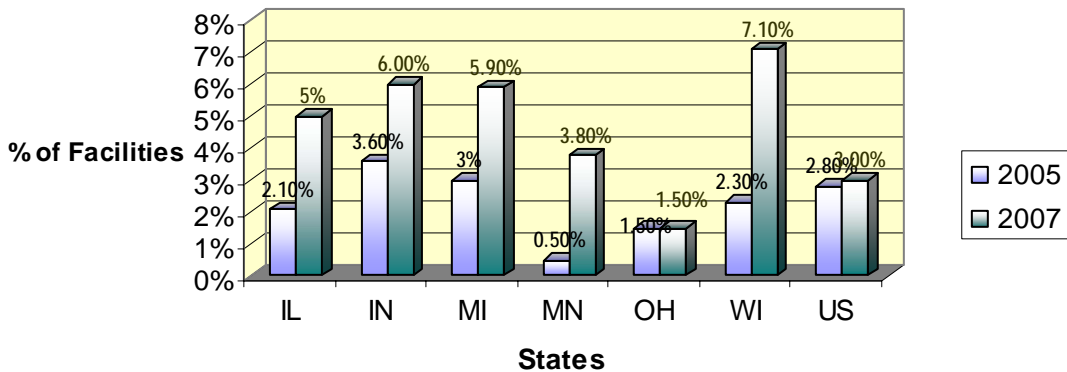


# Distribution by States in Region V

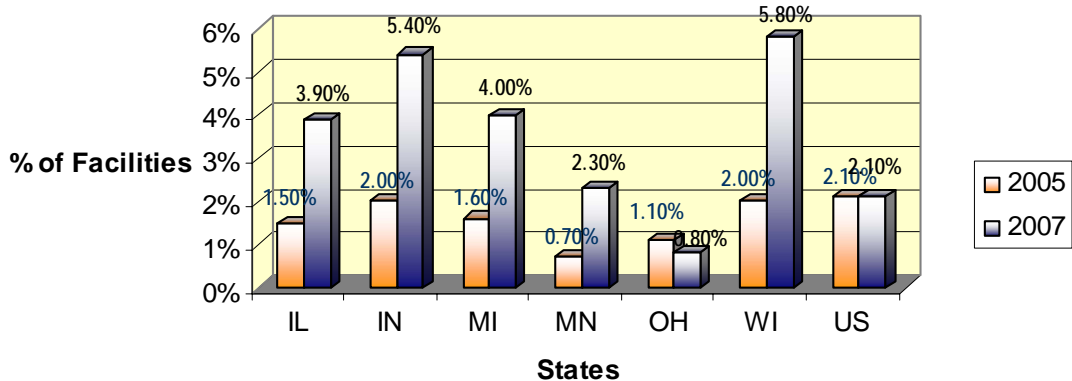
**Scope and Severity Citation at "G" or higher –  
% of facilities in states**



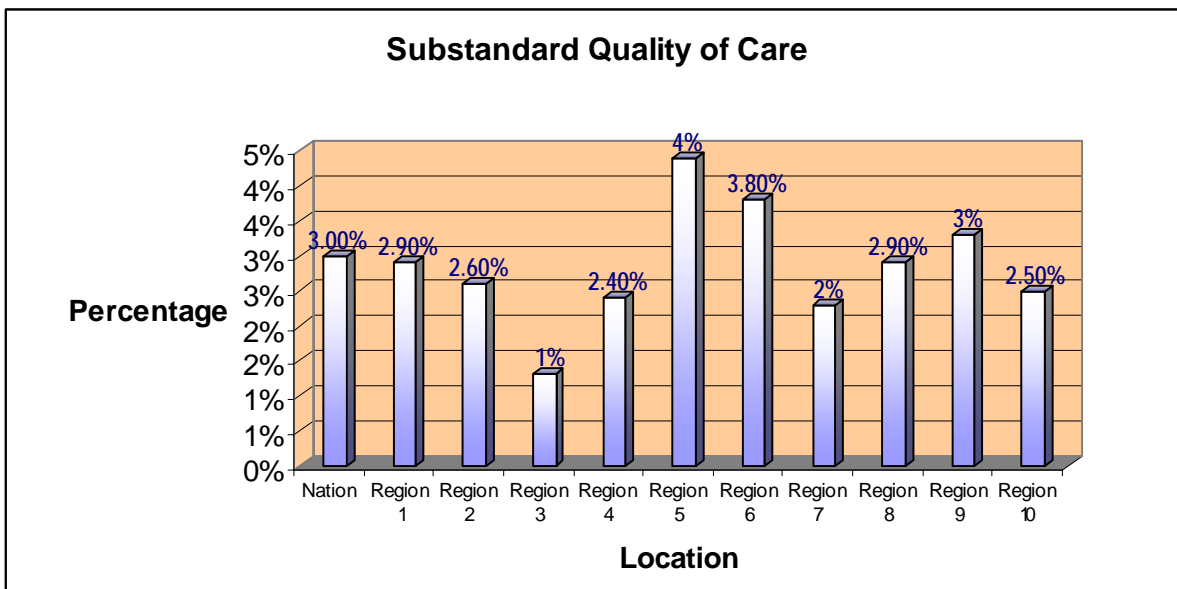
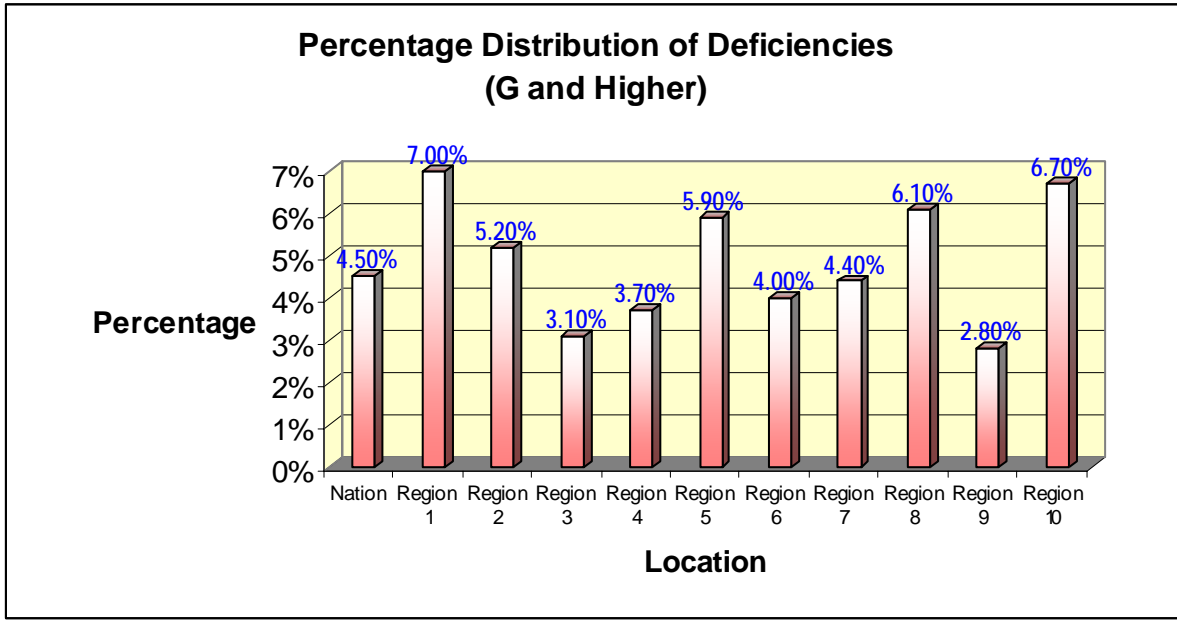
**Substandard Quality of Care Designation – % of facilities in  
states**

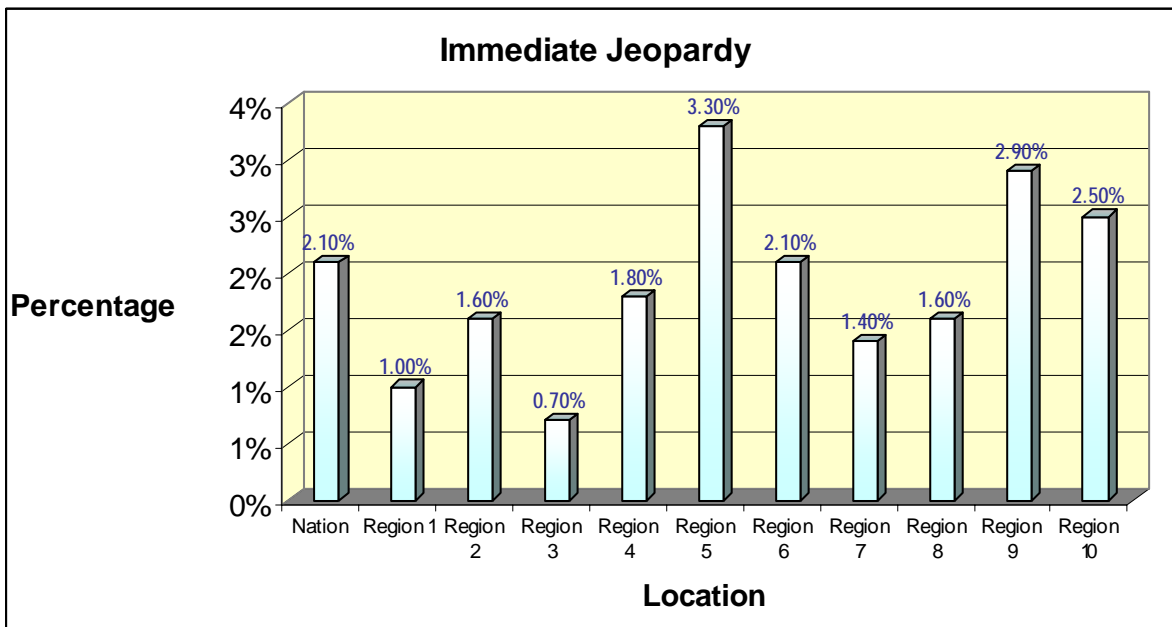


**Immediate Jeopardy Designation – Percent of facilities in  
states**



# Distribution by Regions





## REGIONS

### **Region 1 - Boston**

Connecticut, Massachusetts, Maine, New Hampshire, Rhode Island, Vermont

### **Region 2 - New York**

New Jersey, New York, Puerto Rico, Virgin Islands

### **Region 3 - Philadelphia**

Delaware, District of Columbia, Maryland, Pennsylvania, Virginia, West Virginia

### **Region 4 - Atlanta**

Alabama, Florida, Georgia, Kentucky, Mississippi, North Carolina, South Carolina, Tennessee

### **Region 5 - Chicago**

Illinois, Indiana, Michigan, Minnesota, Ohio, Wisconsin

**Region 6 - Dallas**

Arkansas, Louisiana, New Mexico,  
Oklahoma, Texas

**Region 7 - Kansas City**

Iowa, Kansas, Missouri, Nebraska

**Region 8 - Denver**

Colorado, Montana, North Dakota, South  
Dakota, Utah, Wyoming

**Region 9 - San Francisco**

American Samoa, Arizona, California,  
Commonwealth of the Northern Mariana  
Islands, Guam, Hawaii, Nevada

**Region 10 - Seattle**

Alaska, Idaho, Oregon, Washington