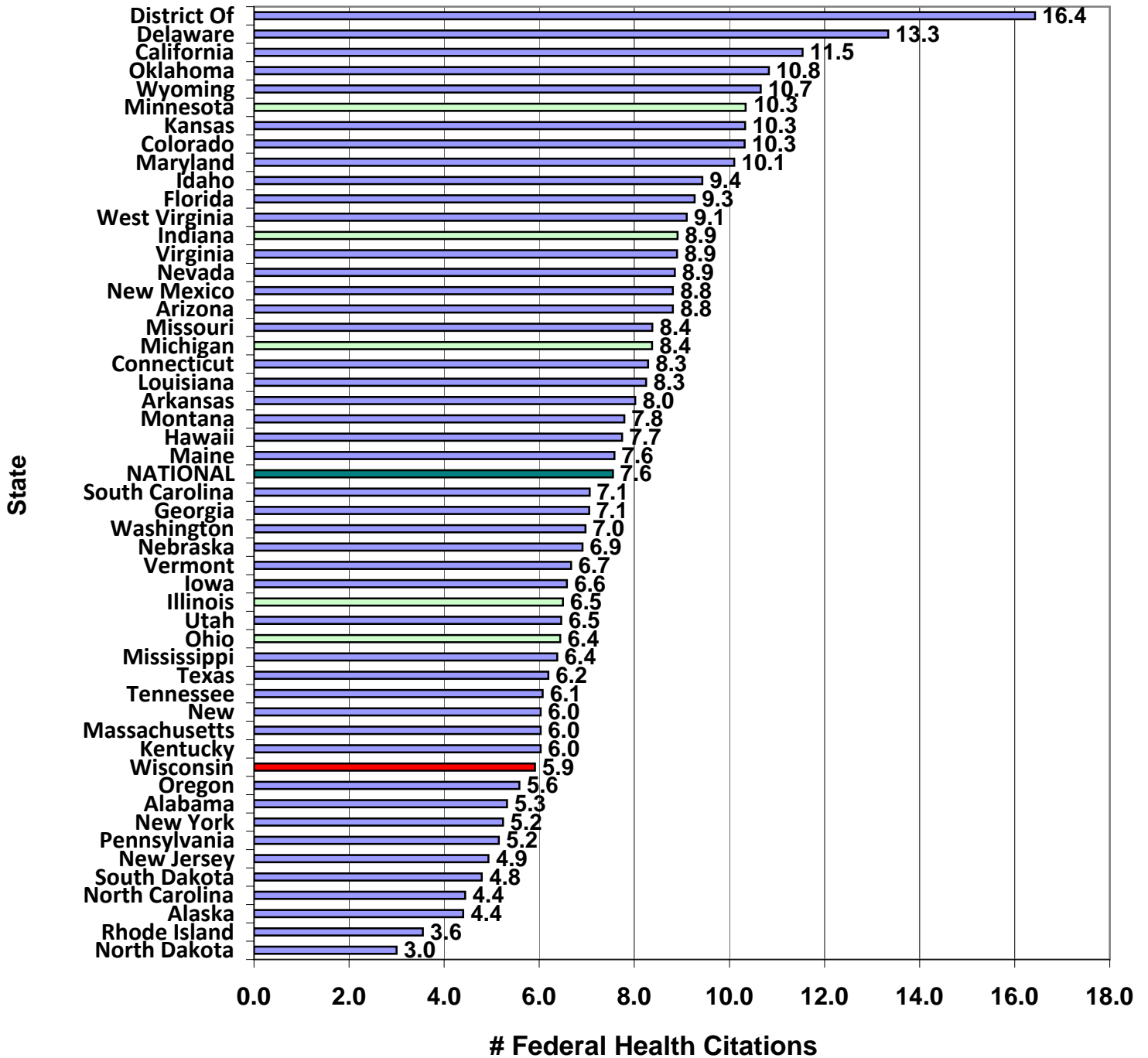
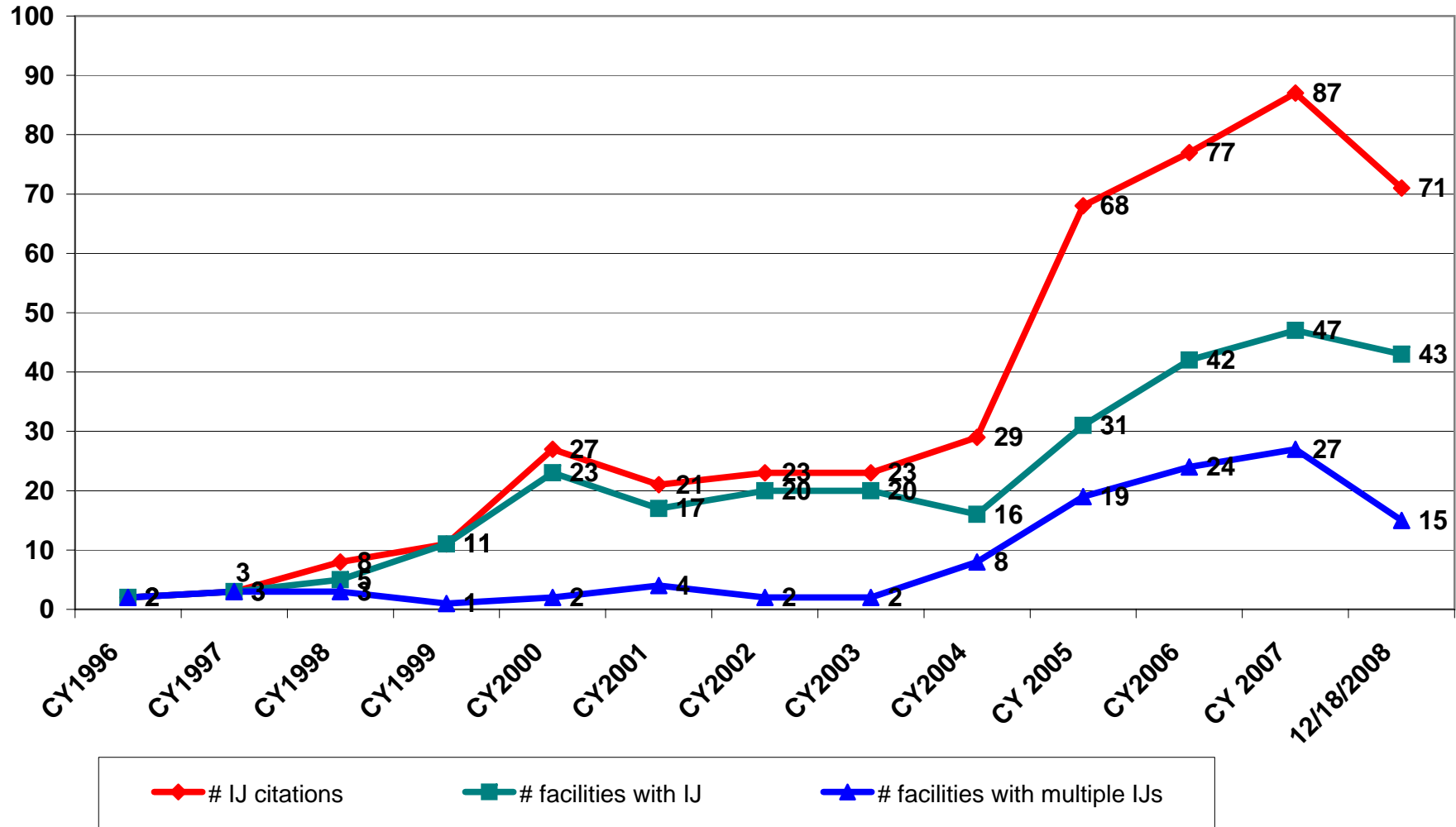


## Average # Federal Health Citations per Full Survey 1/1/08 - 12/16/08

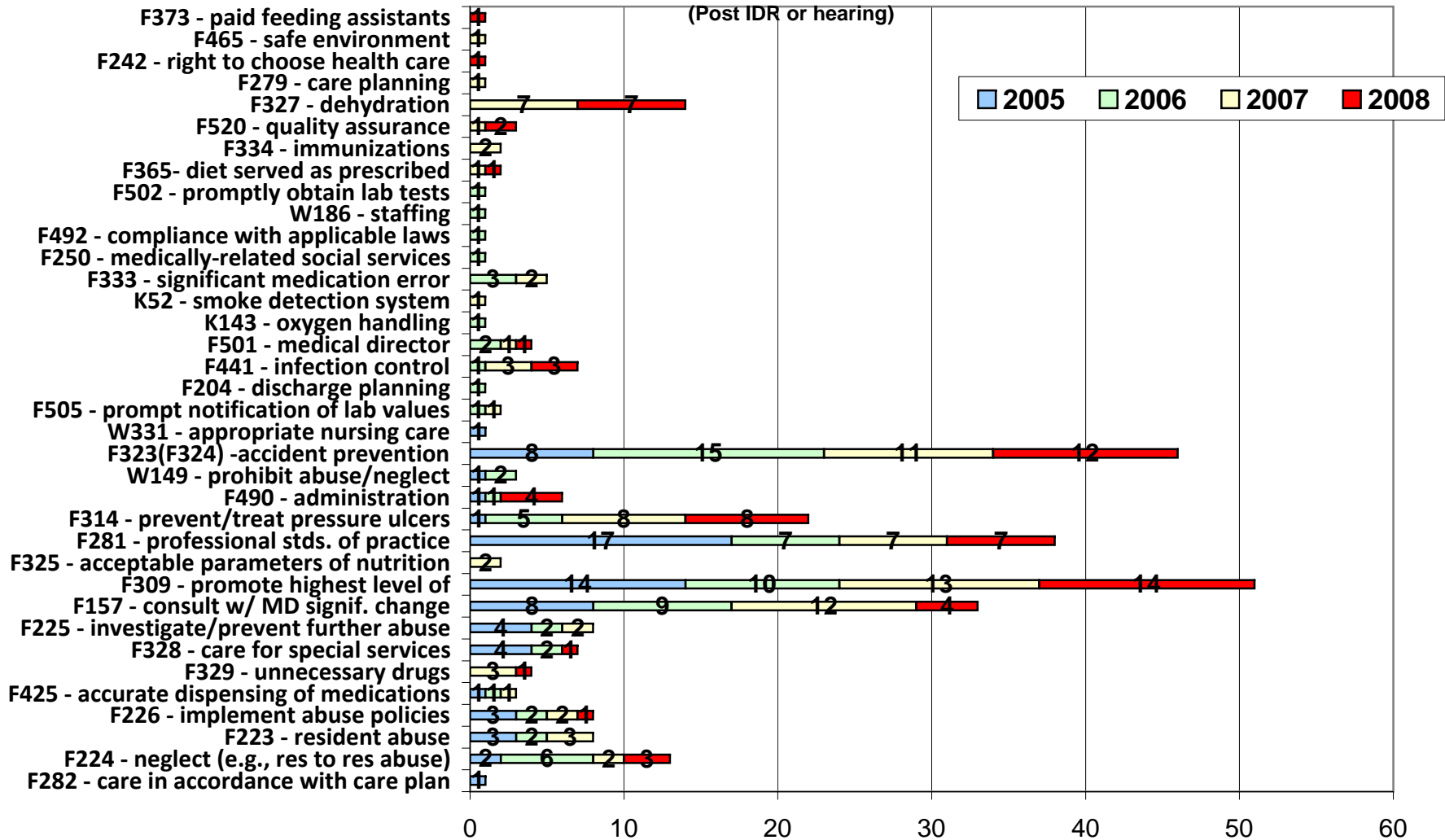


# Immediate Jeopardy Citations 1996 - 12/15/2008

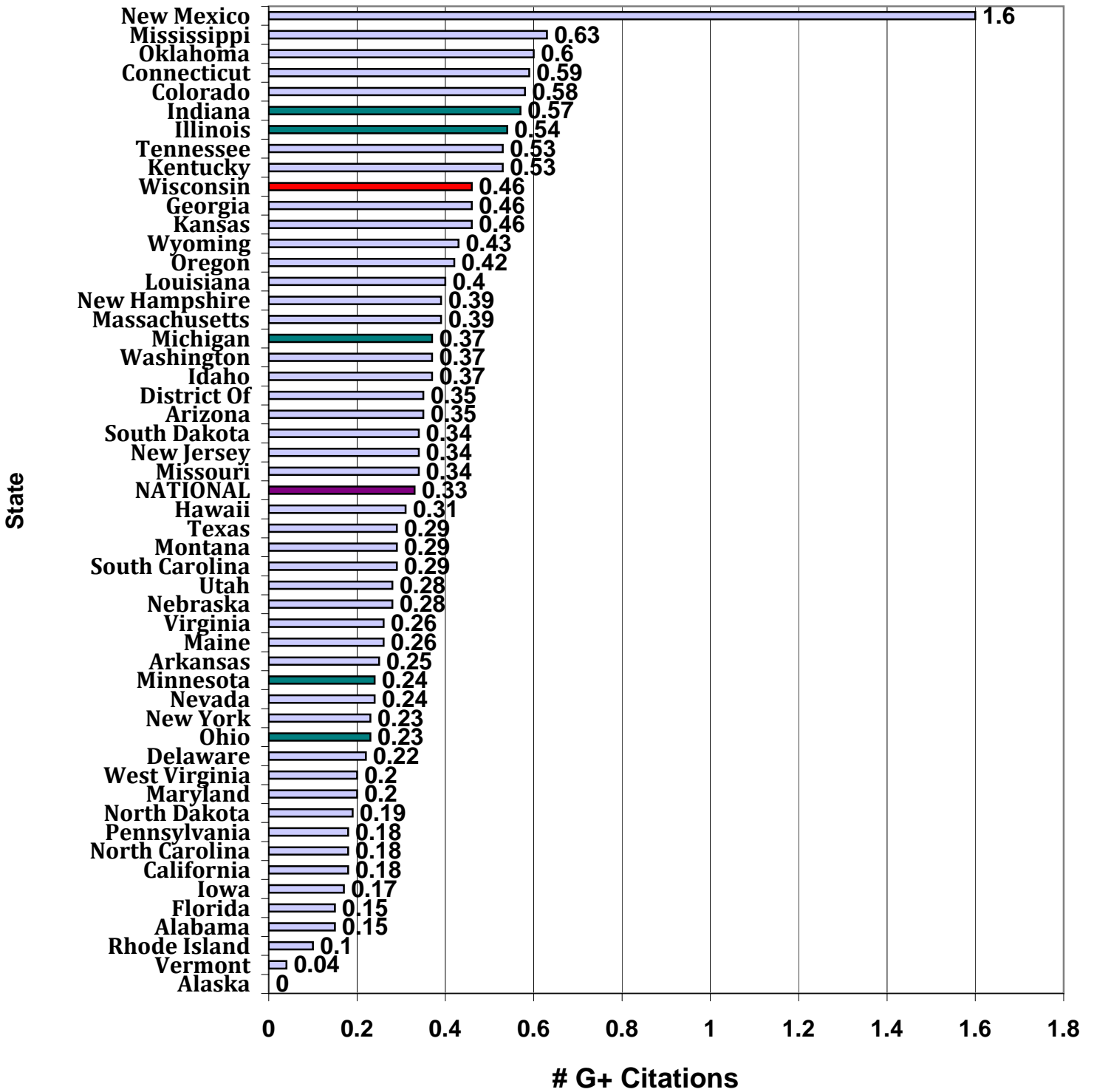
(Post IDR or hearing)



# Federal Tags Cited at the Level of Immediate Jeopardy 2005 thru 12/15/08



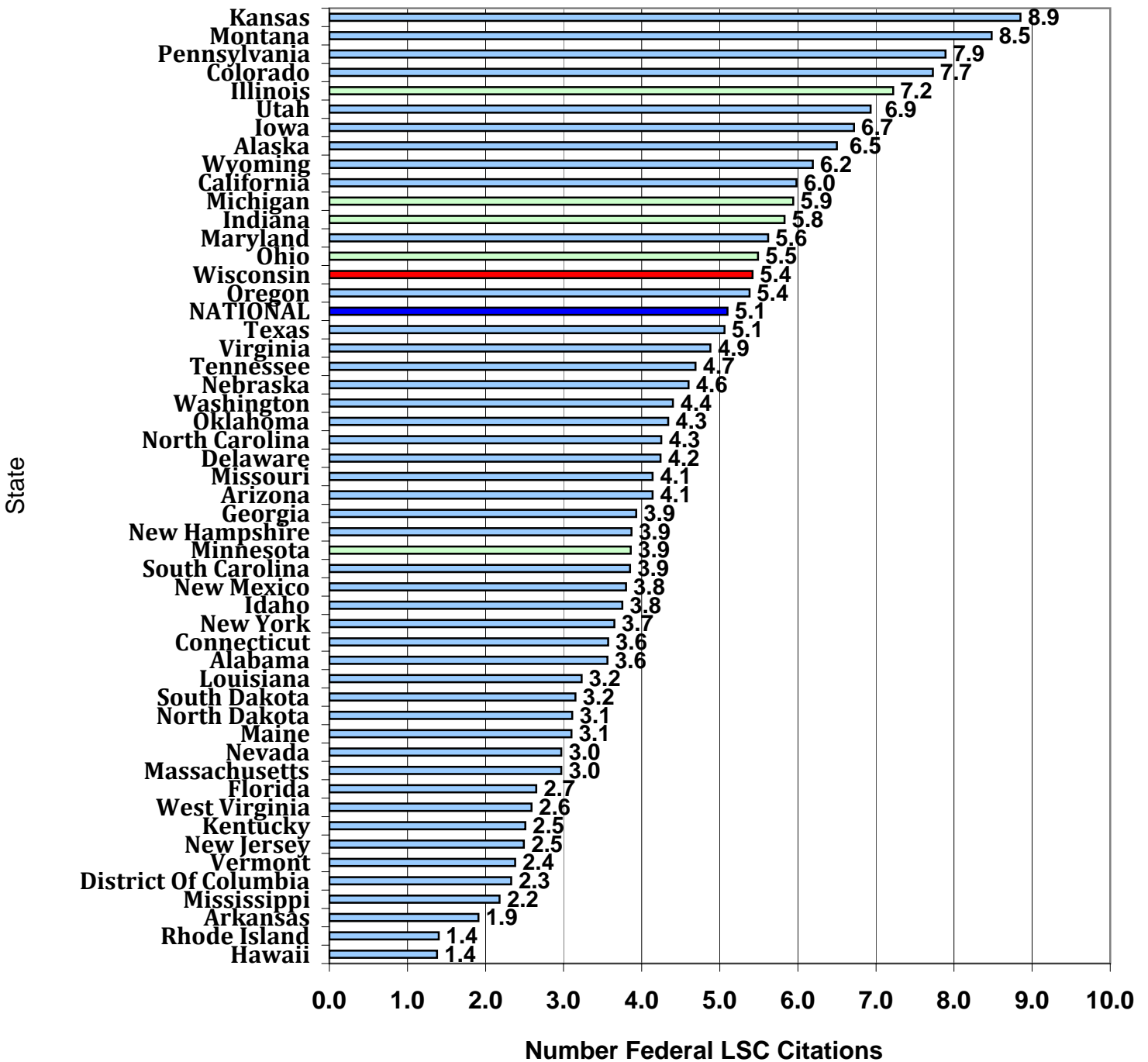
## Average # G+ Citations per Full Survey 1/1/08 - 12/16/08



**Wisconsin Top Ten Federal Health Citations  
Thru October 24, 2008**

<b>Rank</b>	<b>Tag</b>	<b>Description of Regulation</b>	<b># Citations</b>	<b># Cites at Harm or IJ</b>
1	F323	Facility is free of hazardous environment/Supervision and assistive devices to prevent accidents	197	38
2	F314	Treatment to prevent and heal pressure ulcers	118	51
3	F444	Handwashing when indicated by professional standards of practice	117	0
4	F309	Services to attain/maintain highest level of functioning and well being	108	35
5	F279	Development of comprehensive care plan	94	0
6	F225	Reporting and investigation of allegations of abuse, mistreatment, neglect and mistreatment	90	1
7	F315	Prevent UTIs and restore as much urinary continence as possible	87	12
8	F282	Services provided in accordance with the care plan	83	0
9	F157	Promptly consult with a physician following a significant change in a resident's condition	82	13
10	F329	Residents are free from unnecessary drugs	72	10

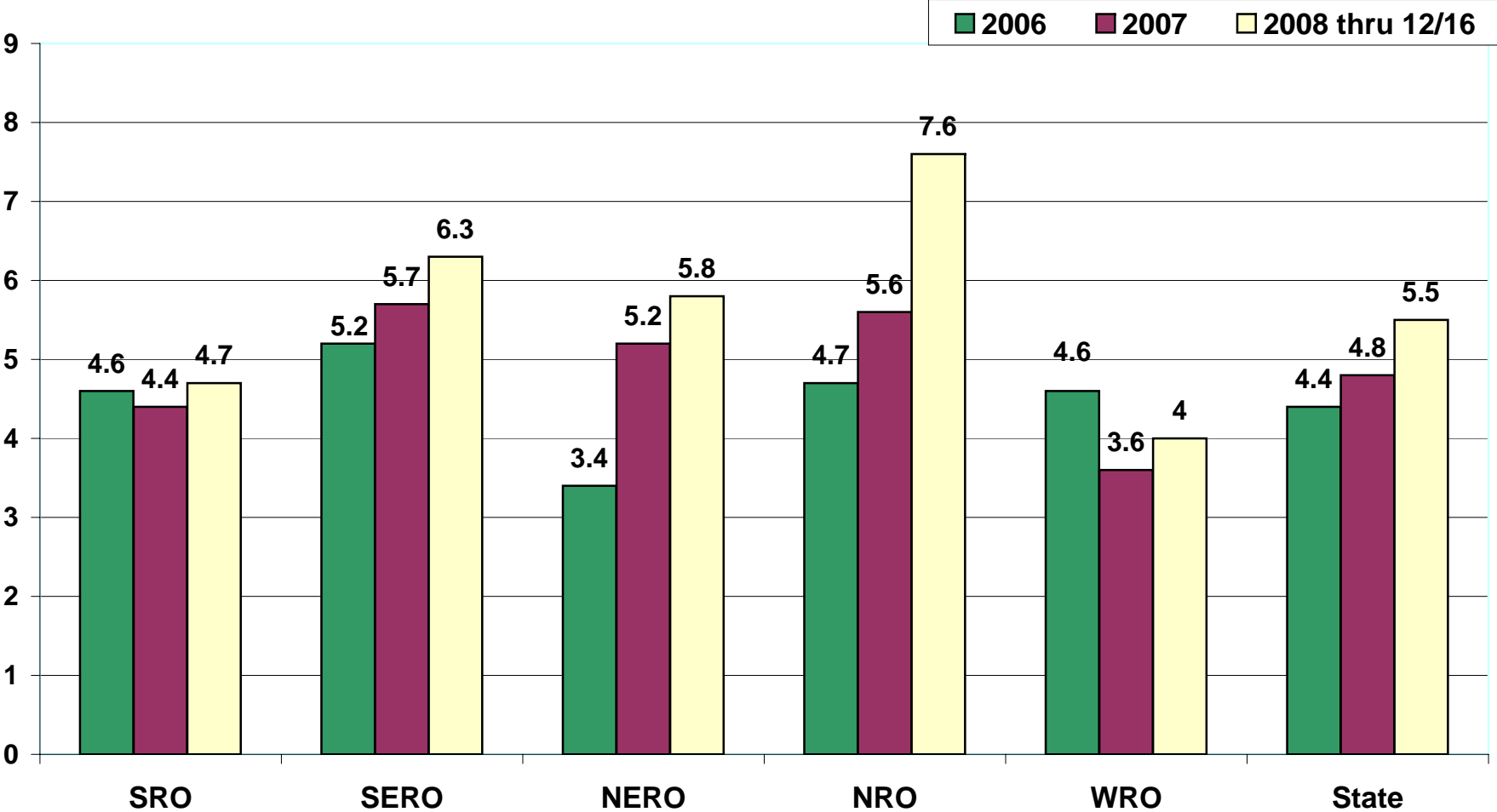
## Average # LSC Citations per Full Survey 1/1/08 - 12/16/08



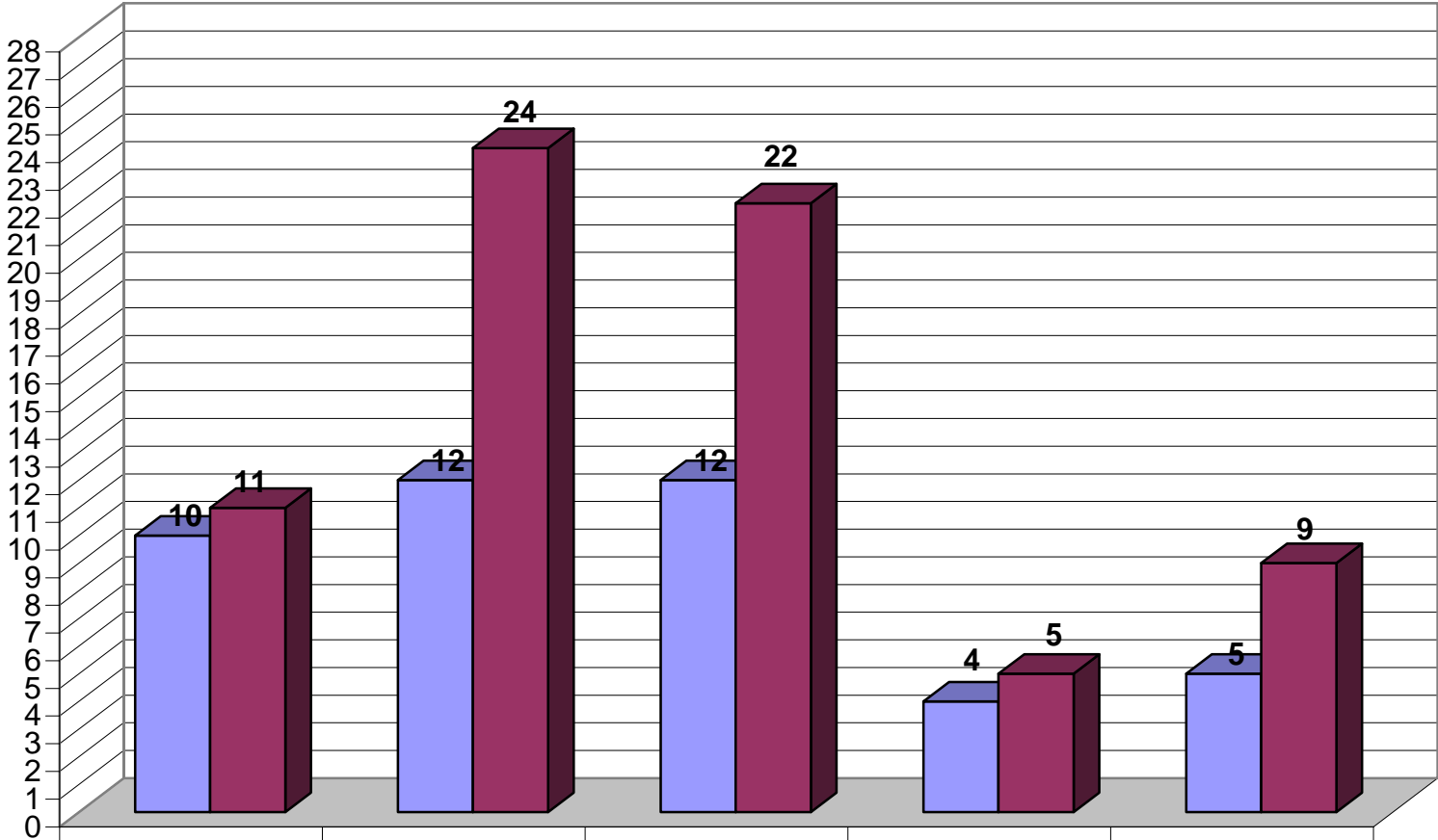
**Wisconsin  
DQA Citing Statistics:  
DQA Regions**

**January 1, 2008  
to  
December 16, 2008**

**Average # Federal Health Citations per Full Survey  
2006- 2008 (12/16)-- by DQA Region**

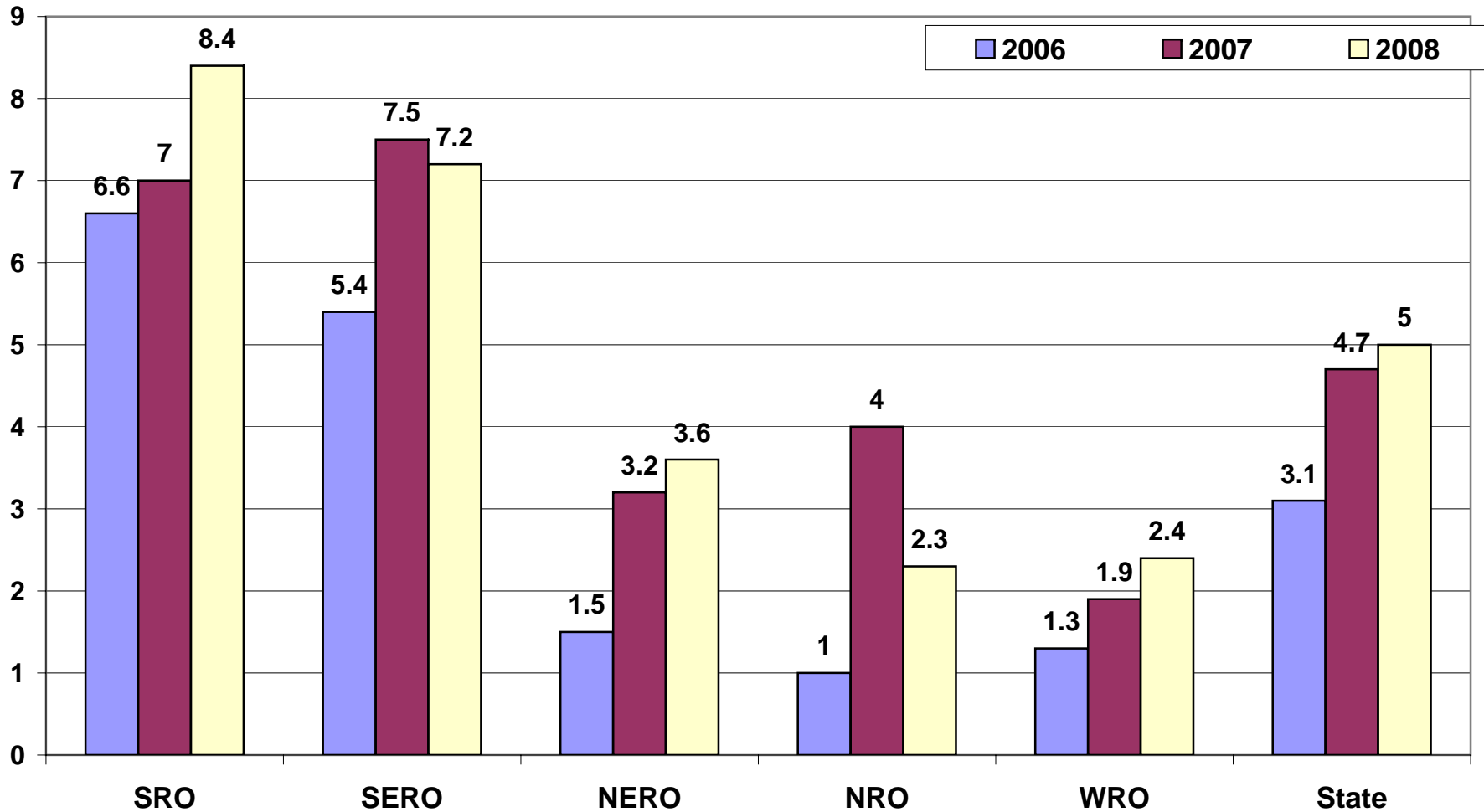


## Immediate Jeopardy by Regional Office thru 12/15/08 (post IDR and/or hearing)

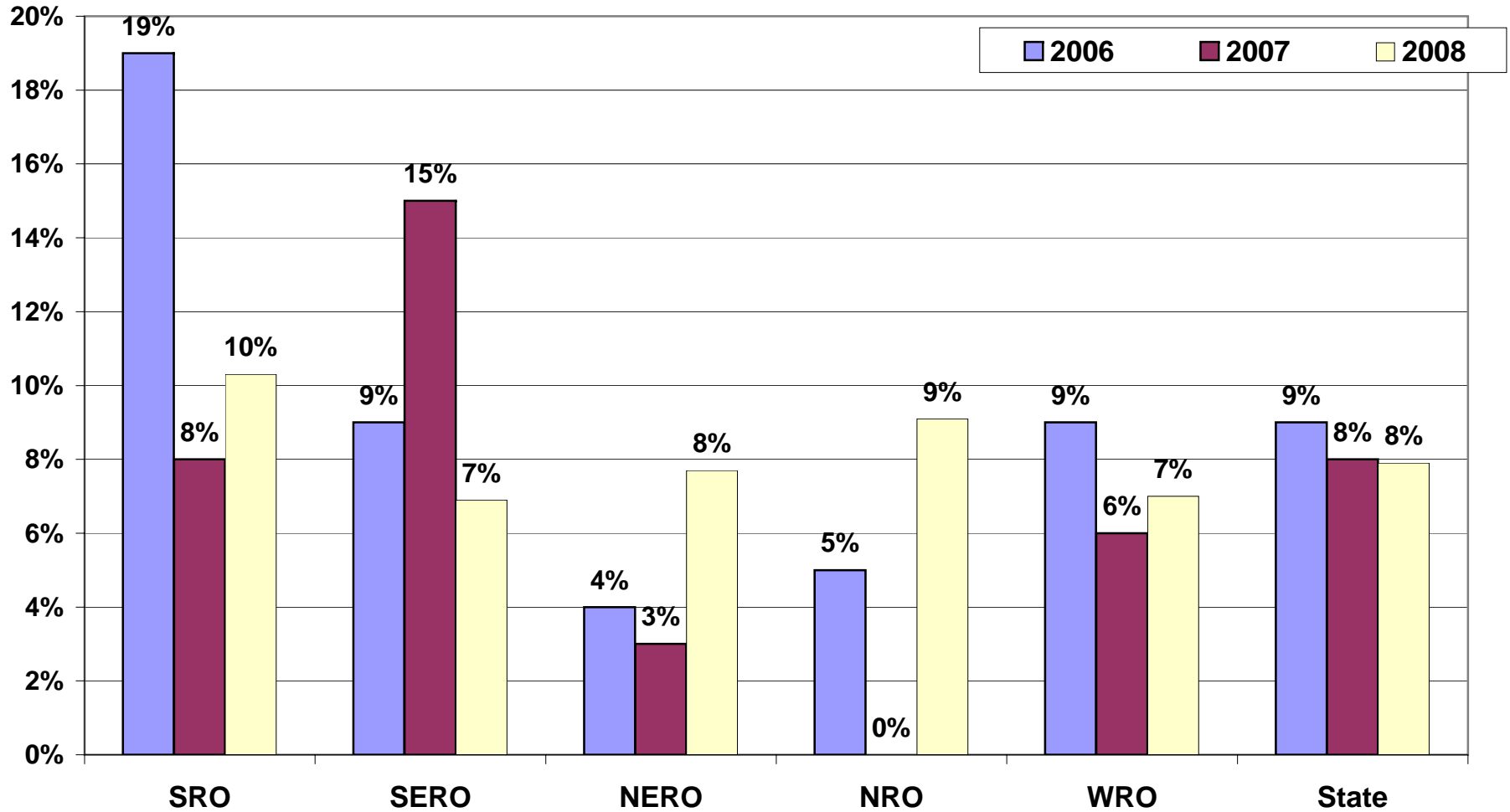


	Southern	Southeastern	Northeastern	Northern	Western
# facilities	10	12	12	4	5
# IJ citations	11	24	22	5	9

### Average # LSC Citations per Full Survey 2006-2008 by DQA Region



### % of Full Surveys with SQC 2006-2008 by DQA Region



## % of Full Surveys with Federal Health Cites at G or Higher 2006-2008 by DQA Region

